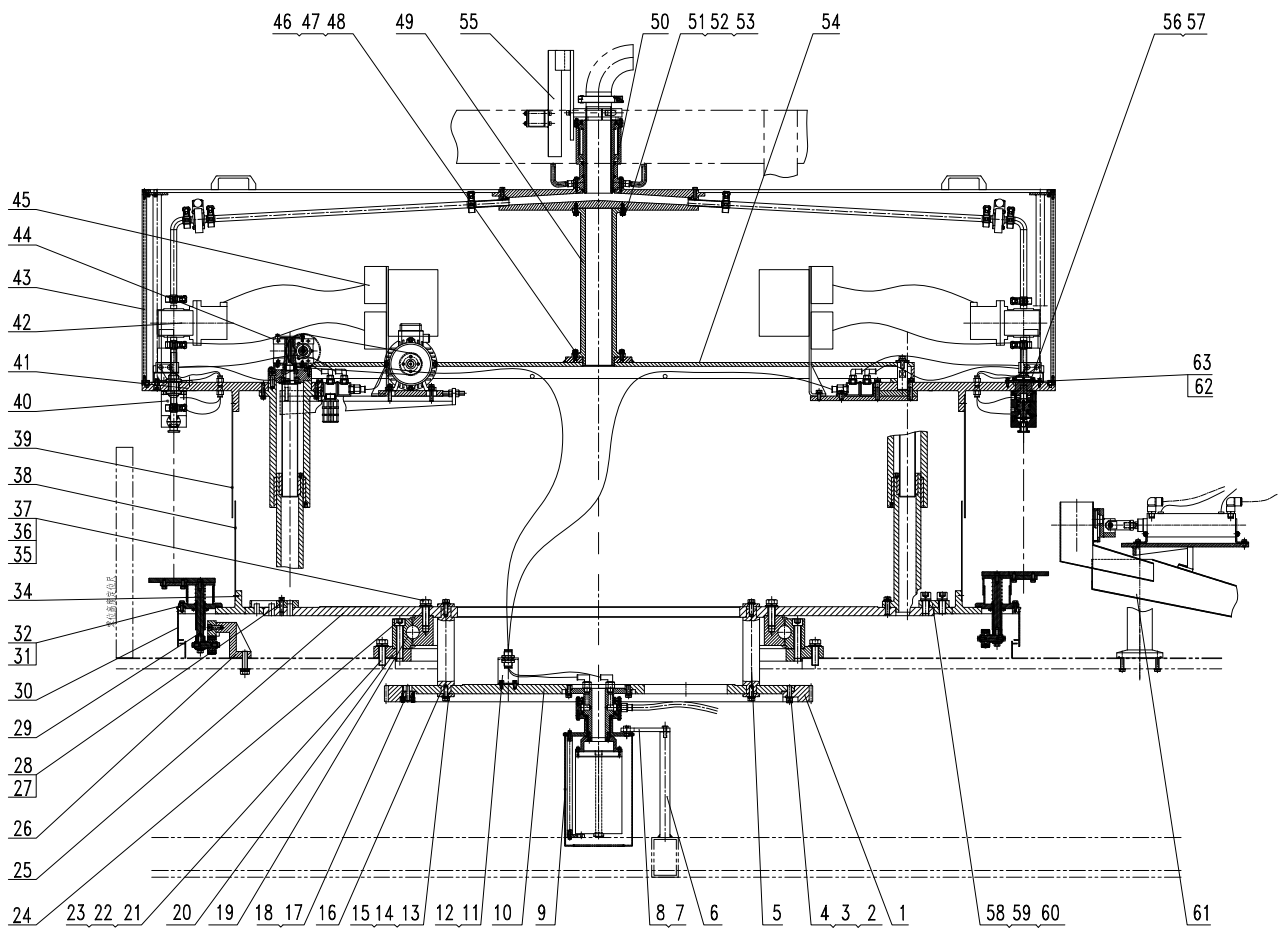


CB1. 10

Mechanical Drawing



TECH-LONG
Runs for you!



TECH-LONG
 Runs for you!

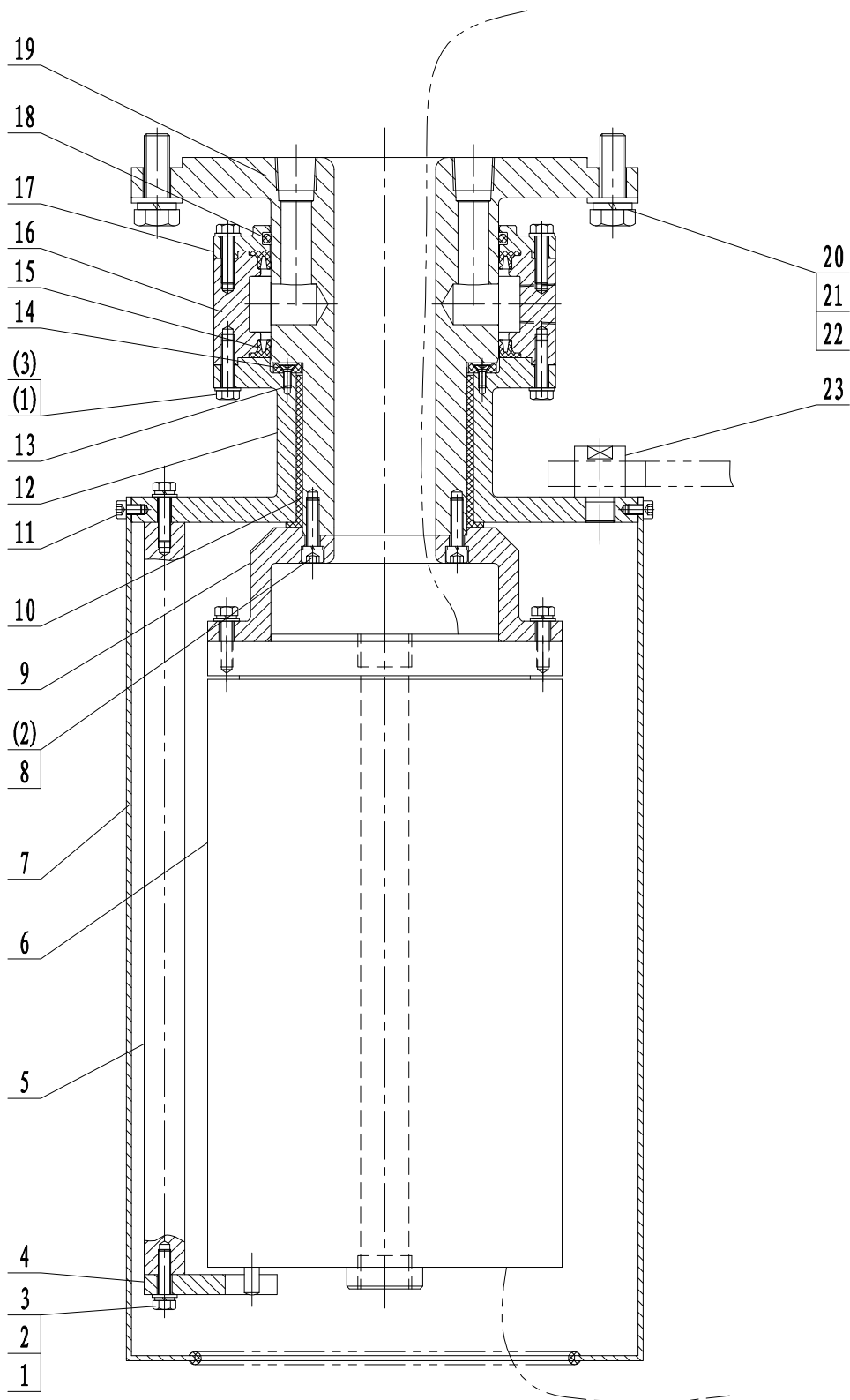
TFC4016. 64A. 02E
 Filler

| No. | Code | Description | 名称 | QTY. | Remark |
|-----|--------------------|--------------------------|-----------|------|--------|
| 1 | TFC4016.64A.02-01 | Gear | 齿轮 | 1 | |
| 2 | GB/T70.1 | Screw M12×40 | 螺钉M12×40 | 8 | |
| 3 | GB/T97.1 | Washer 12 | 垫圈12 | 8 | |
| 4 | GB/T93 | Spring Washer 12 | 弹垫12 | 8 | |
| 5 | TFC4016.64A.02-02 | Supporting Post | 支撑柱 | 8 | |
| 6 | TFC4016.64A.02-03 | Post | 支柱 | 1 | |
| 7 | TFC4016.64A.02-04 | Plate | 防转板 | 1 | |
| 8 | GB/T5783 | Bolt M10×30 | 螺栓M10×30 | 2 | |
| 9 | TFC4016.64A.02.05A | Lower Distributor | 下分配器 | 1 | |
| 10 | TFC4016.64A.02-06 | Carousel | 转盘 | 1 | |
| 11 | TFC4016.64A.02-07 | Plate | 支板 | 1 | |
| 12 | GB/T70.1 | Screw M8×12 | 螺钉M8×12 | 4 | |
| 13 | GB/T5783 | Bolt M12×35 | 螺栓M12×35 | 16 | |
| 14 | GB/T97.1 | Washer 12 | 垫圈12 | 16 | |
| 15 | GB/T93 | Spring Washer 12 | 弹垫12 | 16 | |
| 16 | TFC4016.64A.02-08 | Washer | 垫圈 | 16 | |
| 17 | TFC4016.64A.02.09 | Plate | 定位销板 | 1 | |
| 18 | GB/T70.1 | Screw M5×25 | 螺钉M5×25 | 2 | |
| 19 | DGXB16.02-07 | Supporter | 四点接触回转支承 | 1 | |
| 20 | DGXB16.02-08 | Centering Ring | 支承定位环 | 1 | |
| 21 | GB/T5783 | Bolt M20×65 | 螺栓M20×65 | 18 | |
| 22 | GB/T97.1 | Washer 20 | 垫圈20 | 18 | |
| 23 | GB/T93 | Spring Washer 20 | 弹垫20 | 18 | |
| 24 | GB/T70.1 | Screw M20×100 | 螺钉M20×100 | 36 | |
| 25 | TFC4016.64A.02.11 | Rotary Tray | 旋转盘 | 1 | |
| 26 | TFC4016.64A.02.12 | Guide Rail Assembly | 导轨组件 | 1 | |
| 27 | TFC4016.64A.02-13 | Centering Block | 定位块 | 1 | |
| 28 | GB/T70.1 | Screw M10×35 | 螺钉M10×35 | 1 | |
| 29 | TFC4016.64A.02C.01 | Bottle Supporting Device | 托瓶装置 | 40 | |
| 30 | TFC4016.64A.02.15 | Frame 1 | 围板1 | 1 | |
| 31 | GB/T5783 | Bolt M8×30 | 螺栓M8×30 | 120 | |
| 32 | GB/T97.1 | Washer 8 | 垫圈8 | 120 | |
| 34 | TFC4016.64A.02A.16 | Lower Carousel | 下转盘 | 1 | |



| No. | Code | Description | 名称 | QTY. | Remark |
|-----|--------------------|---------------------------|------------|------|--------|
| 35 | GB/T5783 | Bolt M20 × 65 | 螺栓M20 × 65 | 18 | |
| 36 | GB/T97.1 | Washer 20 | 垫圈20 | 18 | |
| 37 | GB/T93 | Spring Washer 20 | 弹垫20 | 18 | |
| 38 | TFC4016.64A.02.17 | Frame 2 | 围板2 | 1 | |
| 39 | TFC4016.64A.02.18 | Frame 3 | 围板3 | 1 | |
| 40 | QB/D30800E | Filling Valve | 灌装阀 | 40 | |
| 41 | TFC4016.64A.02A.19 | Upper Carousel | 上转盘 | 1 | |
| 42 | TFC4016.64A.02A.20 | Volumetric Filling Device | 定量灌装装置 | 40 | |
| 43 | TFC4016.64A.02A.21 | Frame | 围框 | 1 | |
| 44 | TFC4016.64A.02E.01 | Lifting Device | 升降装置 | 1 | |
| 45 | TFC4016.64A.02C.02 | Electric Control System | 电气控制系统 | 1 | |
| 46 | GB/T5783 | Bolt M8 × 25 | 螺栓M8 × 25 | 6 | |
| 47 | GB/T97.1 | Washer 8 | 垫圈8 | 6 | |
| 48 | GB/T93 | Spring Washer | 弹垫8 | 6 | |
| 49 | TFC4016.64A.02.24 | Post | 大支撑柱 | 1 | |
| 50 | TFC4016.64A.02.25A | Upper Distributor | 上分配器 | 1 | |
| 51 | GB/T5783 | Bolt M8 × 25 | 螺栓M8 × 25 | 6 | |
| 52 | GB/T97.1 | Washer 8 | 垫圈8 | 6 | |
| 53 | GB/T93 | Spring Washer 8 | 弹垫8 | 6 | |
| 54 | TFC4016.64A.02.26 | Plate | 支撑板 | 1 | |
| 55 | TFC4016.64A.02A.31 | Anti-Rotation Device | 上分配器防转装置 | 1 | |
| 56 | TFC4016.64A.02A-28 | Cover Plate 1 | 盖板1 | 40 | |
| 57 | GB/T70.1 | Screw M6 × 16 | 螺钉M6 × 16 | 80 | |
| 58 | TFC4016.64A.02-29 | Fibula Block | 搭块 | 8 | |
| 59 | GB/T70.1 | Screw M20 × 45 | 螺钉M20 × 45 | 16 | |
| 60 | GB/T93 | Spring Washer 20 | 弹垫20 | 16 | |
| 61 | TFC4016.64A.02.30A | CIP Solution Guide | CIP导流装置 | 1 | |
| 62 | GB/T70.1 | Screw M5 × 10 | 螺钉M5 × 10 | 160 | |
| 63 | TFC4016.64A.02A.32 | Bracket | 支架 | 40 | |

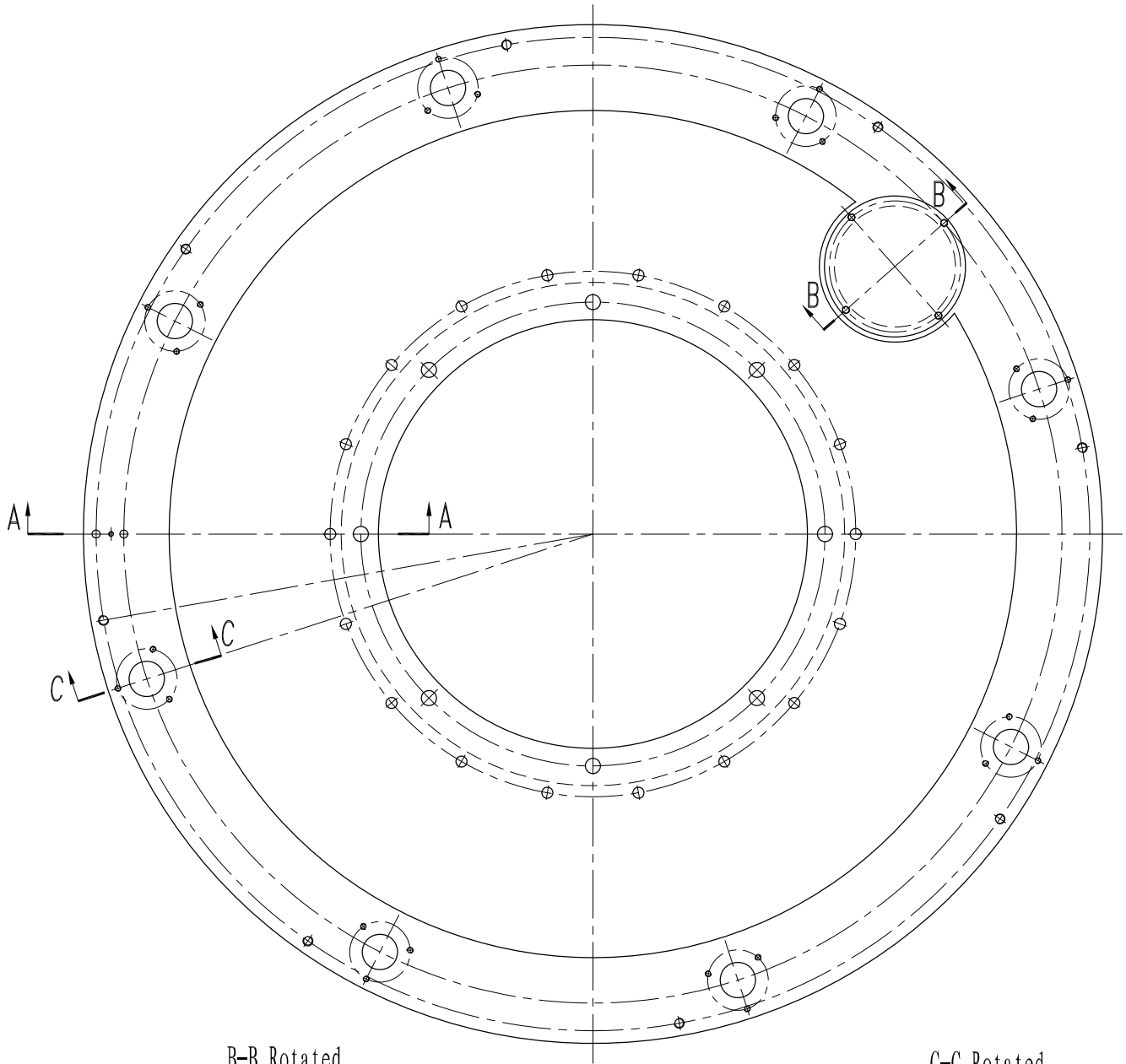
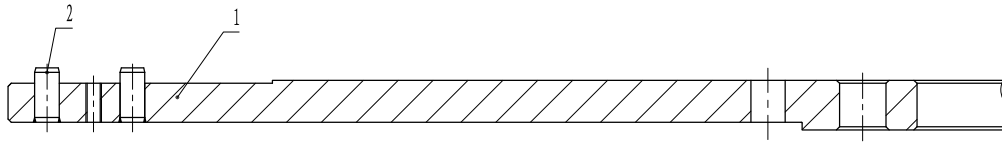




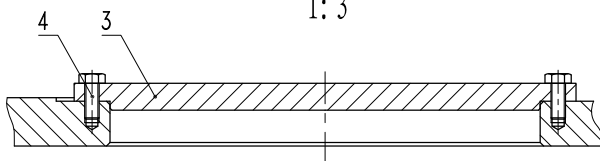
| No. | Code | Description | 名 称 | QTY. | Remark |
|-----|------------------------|-------------------------|----------------|----------|-------------|
| 1 | GB/T5783 | Bolt M5 × 20 | 螺栓M5 × 20 | 18 | |
| 2 | GB/T93 | Spring Washer 5 | 弹垫5 | 16 | |
| 3 | GB/T97.1 | Washer 5 | 平垫圈5 | 18 | |
| 4 | DGXB16.02.04-01 | Plate | 叉板 | 1 | |
| 5 | DGXB16.02.04-02 | Column | 支柱 | 1 | |
| 6 | G300 (PE+A+M+K) | Ring | 滑动环 | 1 | SCHLEIFRING |
| 7 | DGXB16.02.04-03 | Plate | 保护罩 | 1 | |
| 8 | GB/T70.1 | Screw, Hex Head M5 × 20 | 内六角螺钉M5 × 20 | 6 | |
| 9 | DGXB16.02.04-04 | Flange | 连接法兰 | 1 | |
| 10 | WFM-6570-60 | Flanged Bearing | 法兰轴承 | 1 | IGUS |
| 11 | GB/T70.1 | Screw, Hex Head M4 × 6 | 内六角螺钉M4 × 6 | 4 | |
| 12 | DGXB16.02.04-05 | Shell 1 | 外壳1 | 1 | |
| 13 | GB/T819.2 | Screw M3 × 8 | 十字槽沉头螺钉M3 × 8 | 4 | |
| 14 | DGXB16.02.04-06 | Block | 耐磨环 | 1 | |
| 15 | TVM300900-M30S | Seal | 特康旋转泛塞密封 | 2 | B+S |
| 16 | TFC4016.64A.02.05-01 | Shell 2 | 外壳2 | 1 | |
| 17 | DGXB16.02.04-08 | Shell 3 | 外壳3 | 1 | |
| 18 | GB/T3452.1 | O Seal 90 × 3.55 | O型密封圈90 × 3.55 | 1 | |
| 19 | DGXB16.02.04-09 | Shaft | 内轴 | 1 | |
| 20 | GB/T5783 | Bolt M10 × 30 | 螺栓M10 × 30 | 4 | |
| 21 | GB/T97.1 | Washer 10 | 平垫圈10 | 4 | |
| 22 | GB/T93 | Spring Washer 10 | 弹垫10 | 4 | |
| 23 | DGXB16.02.04-10 | Column 2 | 支柱2 | 1 | |



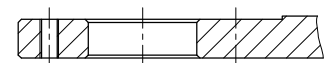
A-A
1:3



B-B Rotated
1:3



C-C Rotated
1:3



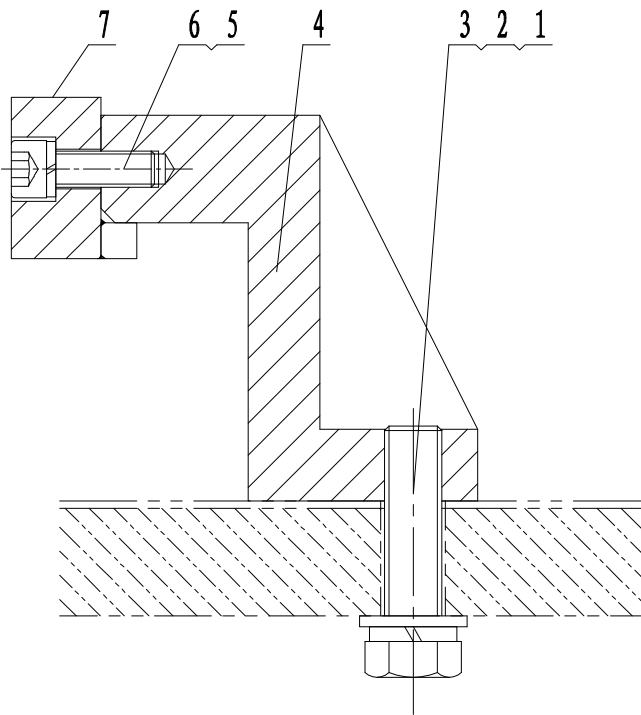
TECH-LONG
Runs for you!

TFC4016. 64A. 02. 11
Rotary Plate

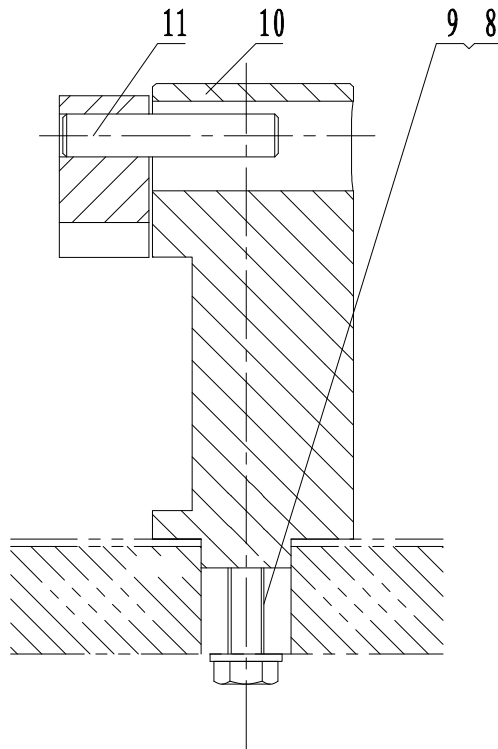
| No. | Code | Description | 名称 | QTY. | Remark |
|-----|----------------------|---------------|------------|------|--------|
| 1 | TFC4016.64A.02.11-01 | Carousel | 转盘 | 1 | |
| 2 | GB/T119 | Pin 16m6 × 35 | 销16m6 × 35 | 2 | |
| 3 | DGXB16.02-27 | Cover Plate 2 | 盖板2 | 1 | |
| 4 | GB/T5783 | Bolt M8 × 20 | 螺栓M8 × 20 | 4 | |

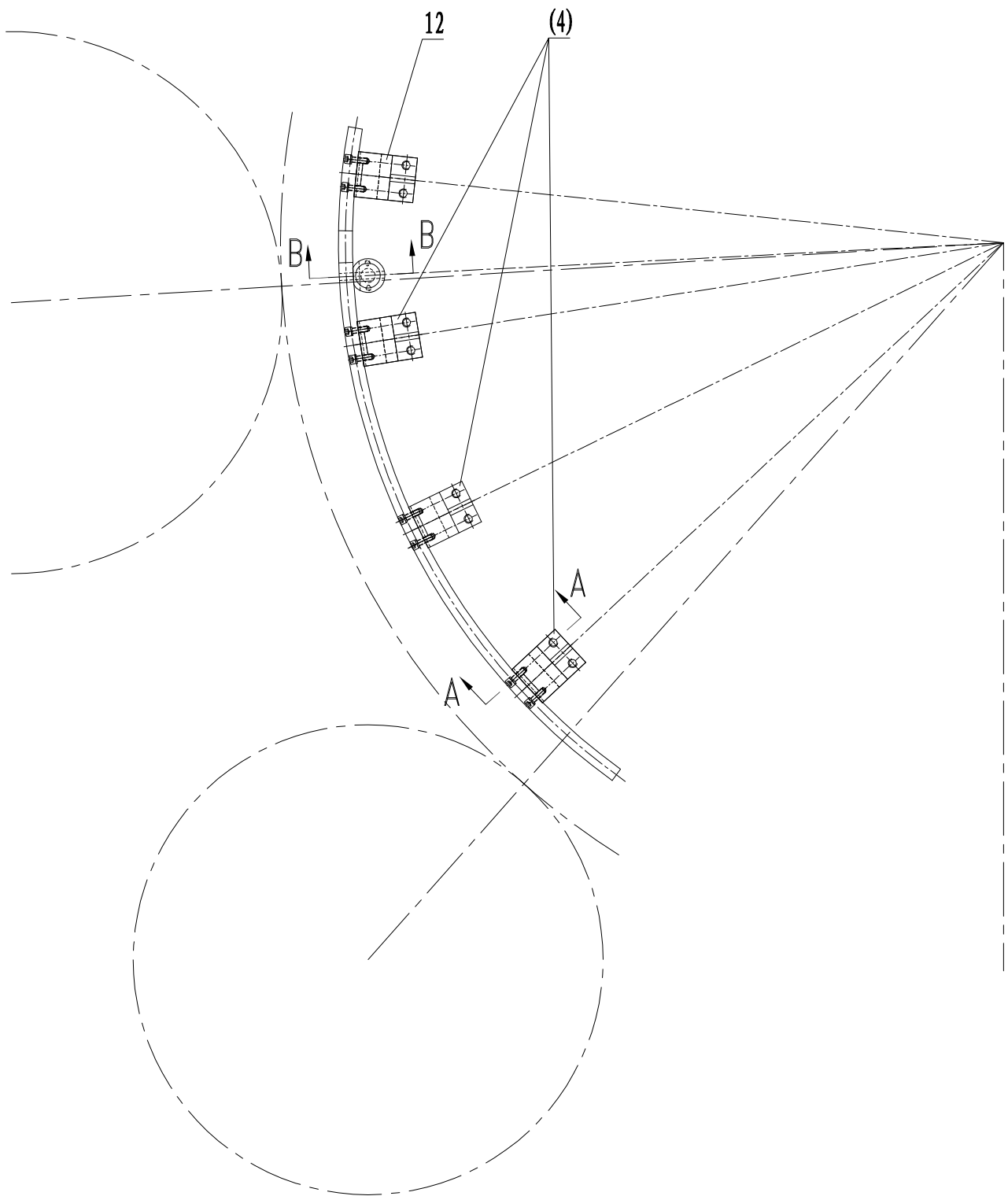


A-A Rotated



B-B Rotated





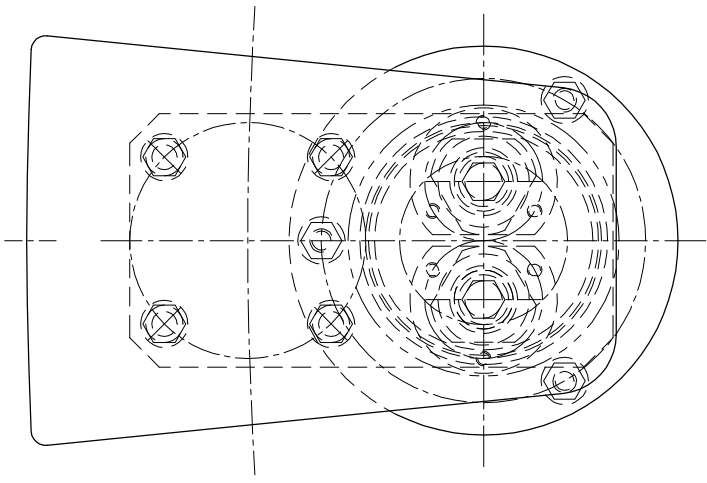
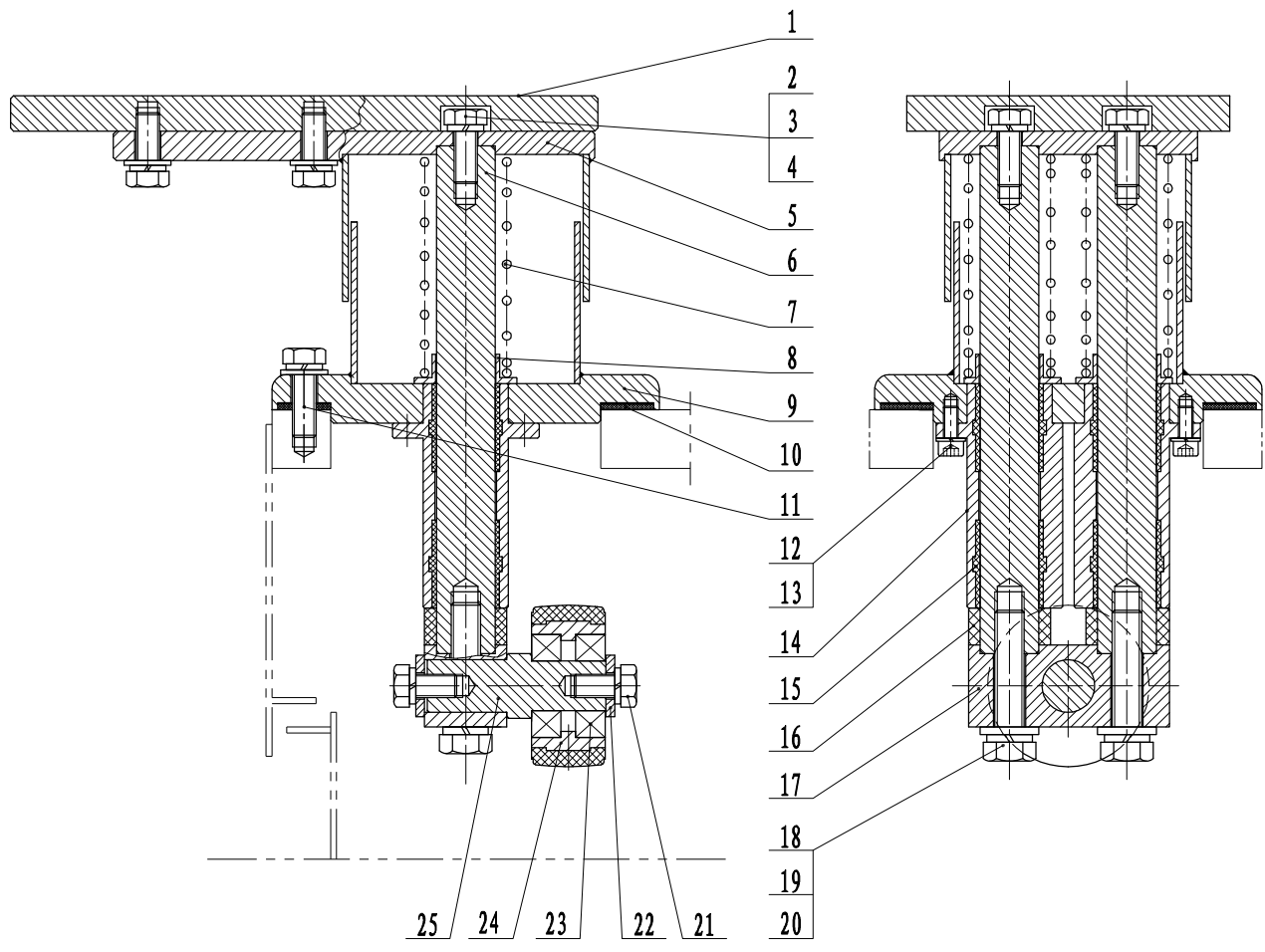
| No. | Code | Description | 名 称 | QTY. | Remark |
|-----|--------------------------|--------------------------|---------------|------|--------|
| 1 | GB/T5783 | Bolt M16 × 60 | 螺栓M16 × 60 | 8 | |
| 2 | GB/T97.1 | Washer 16 | 平垫圈16 | 8 | |
| 3 | GB/T93 | Spring Washer 16 | 弹垫16 | 8 | |
| 4 | TFC4016. 64A. 02. 12-01 | Bracket 1 | 支架1 | 3 | |
| 5 | GB/T70.1 | Screw, Hex Head M10 × 30 | 内六角螺钉M10 × 30 | 6 | |
| 6 | GB/T93 | Spring Washer 10 | 弹垫10 | 6 | |
| 7 | TFC4016. 64A. 02. 12. 02 | Guide Rail | 导轨 | 1 | |
| 8 | GB/T5783 | Bolt M10 × 50 | 螺栓M10 × 50 | 2 | |
| 9 | GB/T97.1 | Washer 10 | 平垫圈10 | 2 | |
| 10 | DGXB16. 02. 26-03 | Plate | 定位柱 | 1 | |
| 11 | GB/T119.1 | Pin 12m6 × 60 | 销12m6 × 60 | 1 | |
| 12 | TFC4016. 64A. 02. 12-03 | Bracket 2 | 支架2 | 1 | |



TECH-LONG
Runs for you!

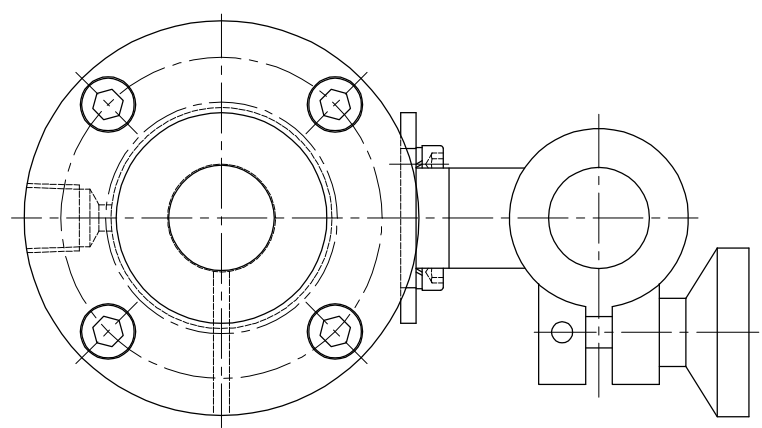
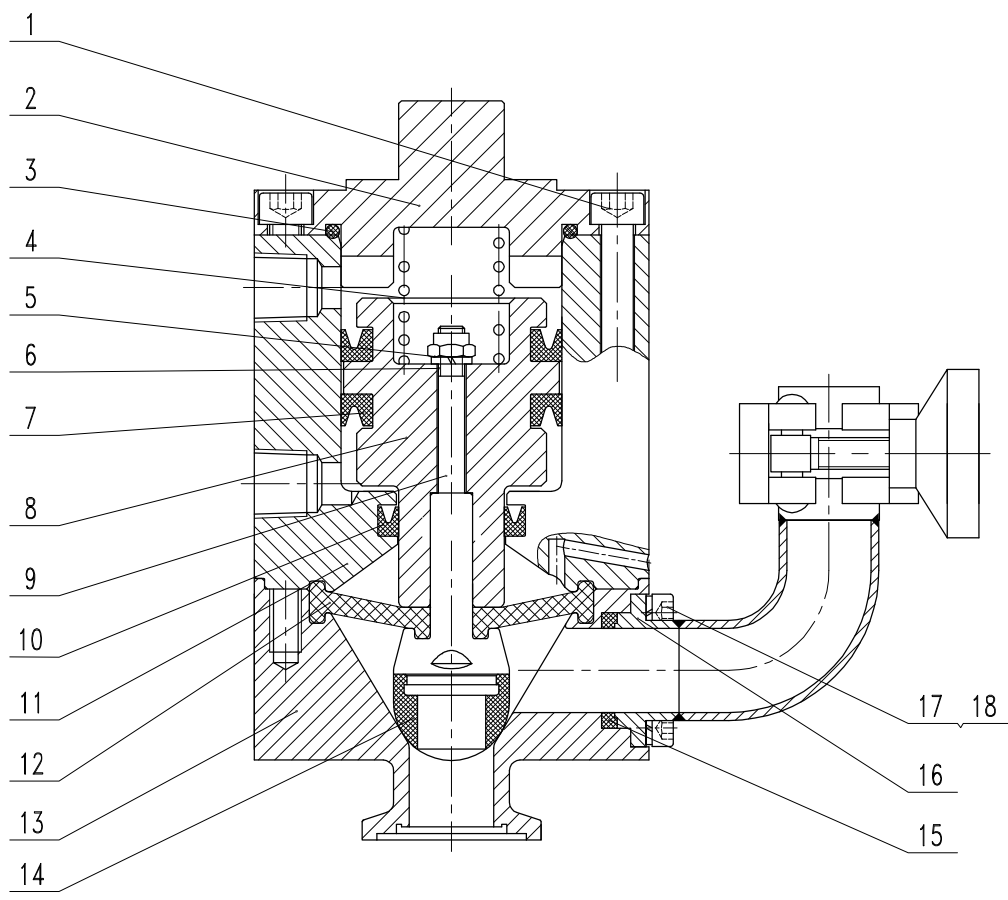
TFC4016. 64A. 02. 12

Guide Rail Assembly



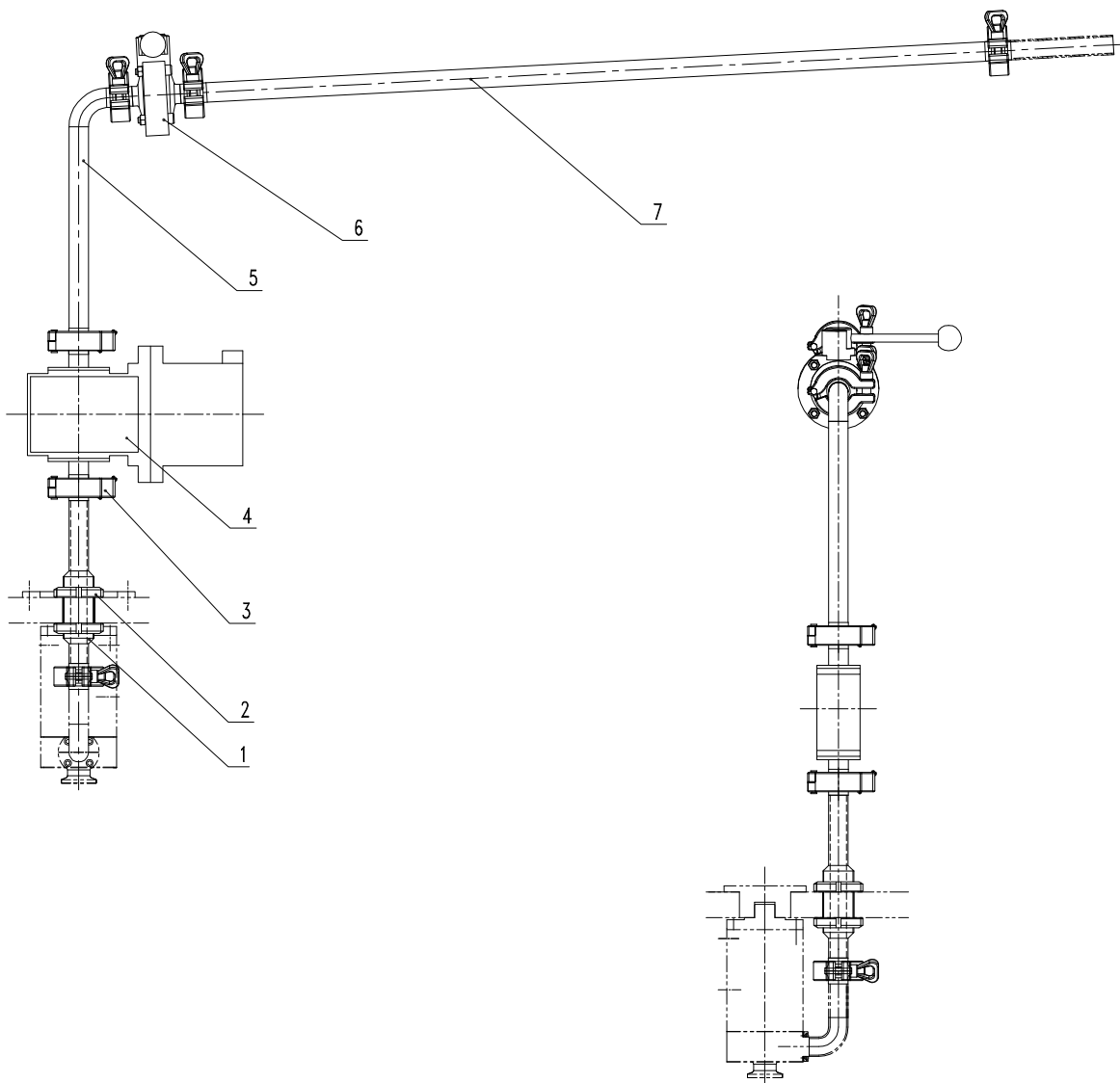
| No. | Code | Description | 名称 | QTY. | Remark |
|-----|-----------------------|------------------|-------------|------|--------|
| 1 | TFC4016.64A.02C.01-01 | Supporting Plate | 托板 | 1 | |
| 2 | GB/T 5783 | Screw M8 × 20 | 螺钉 M8X20 | 6 | |
| 3 | GB/T 93 | Washer 8 | 垫圈 8 | 11 | |
| 4 | GB/T 97.1 | Spring Washer 8 | 垫圈 8 | 7 | |
| 5 | TFC4016.64A.02C.01.02 | Connection Plate | 连接板 | 1 | |
| 6 | TFC4016.64A.02C.01-03 | Shaft | 导轴 | 2 | |
| 7 | TFC4016.64A.02C.01-04 | Spring | 压簧 | 2 | |
| 8 | TFC4016.64A.02C.01-05 | Spring Seat | 压簧座 | 2 | |
| 9 | TFC4016.64A.02C.01.06 | Base Seat | 底座 | 1 | |
| 10 | TFC4016.64A.02A.14-16 | Gasket | 垫 | 1 | |
| 11 | GB/T 5783 | Bolt M8 × 25 | 螺栓 M8 × 25 | 3 | |
| 12 | GB/T 70.1 | Bolt M5 × 12 | 螺栓 M5X12 | 6 | |
| 13 | GB/T 93 | Washer 5 | 垫圈 5 | 6 | |
| 14 | TFC4016.64A.02B.01-01 | Bearing Seat | 轴承座 | 2 | |
| 15 | JUM-02-20 | Bearing | 直线轴承 | 4 | |
| 16 | TFC4016.64A.02.14-08 | Buffer Gasket | 缓冲垫 | 2 | |
| 17 | TFC4016.64A.02C.01-07 | Mounting Block | 安装块 | 1 | |
| 18 | GB/T 5783 | Screw M10 × 45 | 螺钉 M10X45 | 2 | |
| 19 | GB/T 93 | Washer 10 | 垫圈 10 | 2 | |
| 20 | GB/T 97.1 | Spring Washer 10 | 垫圈 10 | 2 | |
| 21 | GB/T 5783 | Bolt M8 × 16 | 螺栓 M8X16 | 2 | |
| 22 | TFC4016.64A.02.14-10 | Plate | 轴端挡板 | 2 | |
| 23 | GB/T 276 | Bearing 6003-2LS | 轴承 6003-2LS | 2 | |
| 24 | TFC4016.64A.02.14.11 | Roller | 滚轮 | 1 | |
| 25 | TFC4016.64A.02C.01-08 | Small Shaft | 小轴 | 1 | |



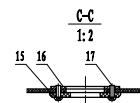
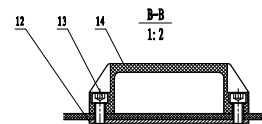
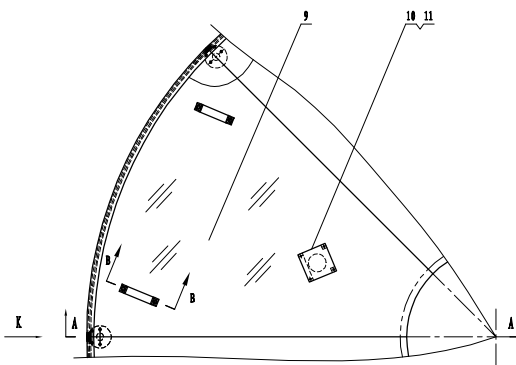
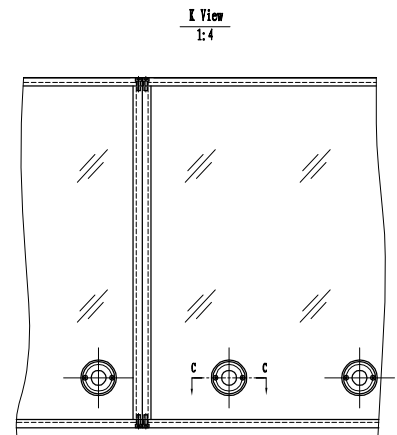
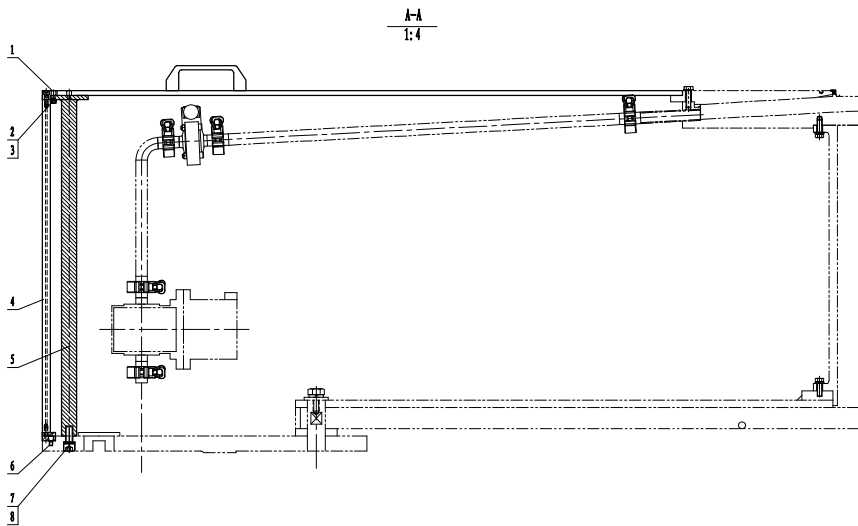


| No. | Code | Description | 名称 | QTY. | Remark |
|-----|-----------------|------------------|----------------|------|--------|
| 1 | GB/T70.1 | Screw M6X80 | 螺钉M6×80 | 4 | |
| 2 | QB/D30800D-09 | Spring Seat | 弹簧座 | 1 | |
| 3 | GB/T3452.1 | O Seal 42.5X2.65 | O型密封圈42.5×2.65 | 1 | |
| 4 | QB/D30800D-01 | Spring | 弹簧 | 1 | |
| 5 | GB/T6172.2-2000 | Nut M5 | 螺母 M5 | 1 | |
| 6 | GB/T93 | Washer 5 | 垫圈 5 | 1 | |
| 7 | APDE10420-WU9E1 | Y Seal | Y型密封圈 | 2 | |
| 8 | QB/D30800E-01 | Lever | 活动杆 | 1 | |
| 9 | QB/D30800D-03 | Valve Stem | 阀杆 | 1 | |
| 10 | ARUP00200-WU9E1 | Y Seal | Y型密封圈 | 1 | |
| 11 | QB/D30800D-04 | Sniff Block | 阀座 | 1 | |
| 12 | QB/D30800D-05 | Diaphragm | 隔膜 | 1 | |
| 13 | QB/D30800D-06 | Valve Head | 阀头 | 1 | |
| 14 | QB/D30800D-07 | Seal Ring | 密封环 | 1 | |
| 15 | QB/D30802 | Gasket | 密封垫 | 1 | |
| 16 | QB/D30800D.08 | Infeed Tube | 进液管 | 1 | |
| 17 | GB/T93 | Washer 4 | 垫圈4 | 4 | |
| 18 | GB/T70.1 | Screw M4X10 | 螺钉 M4×10 | 4 | |



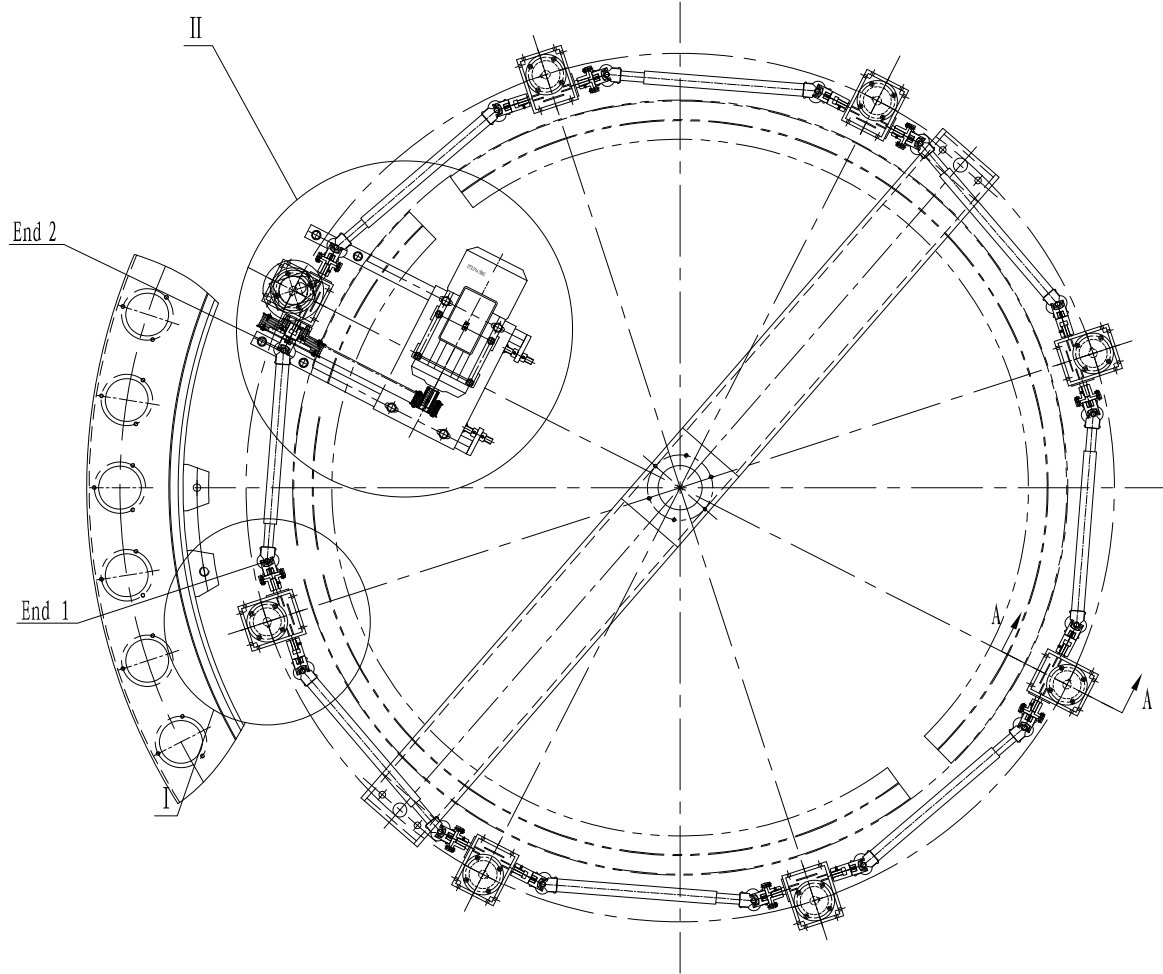


| No. | Code | Description | 名 称 | QTY. | Remark |
|-----|-----------------------|--------------------------------|------------------|------|-------------------|
| 1 | TFC4016.64A.02A.20.01 | Tube | 螺杆管 | 1 | |
| 2 | GB/T812 | Nut M30×1.5 | 圆螺母M30×1.5 | 2 | |
| 3 | DIN32676 | Joint 3/4" | 卡箍式活接3/4" | 5 | L=25.4 |
| 4 | 5BH15-1G0A1GB041A1 | DOSIMAG DN15 Flowmeter | DOSIMAG DN15 流量计 | 1 | E+H |
| 5 | TFC4016.64A.02A.20.02 | Tube | 弯管 | 1 | |
| 6 | | Manual Butterfly Valve φ19x1.5 | 焊接式手动蝶阀 φ19x1.5 | 1 | |
| 7 | | Tube φ19x1.5 | 内抛光外亚光管 φ19x1.5 | 1 | L=760.65(on site) |

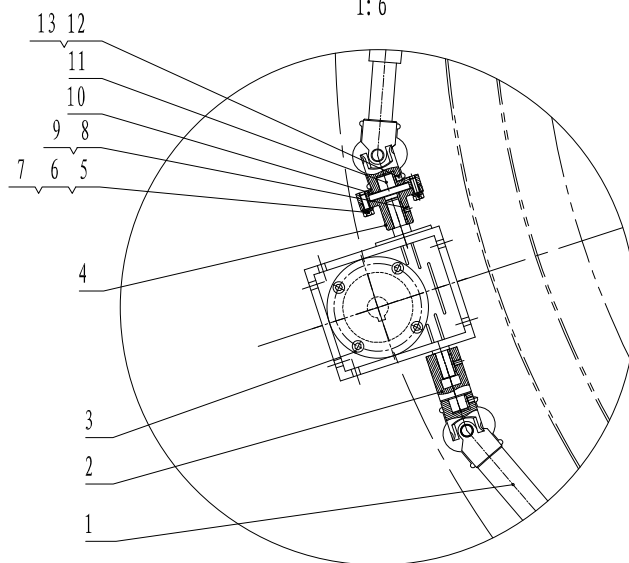


| No. | Code | Description | 名 称 | QTY. | Remark |
|-----|-----------------------|------------------|---------------|------|--------|
| 1 | TFC4016.64A.02.21-01 | Pin | 销 | 32 | |
| 2 | GB/T 6170 | nut M5 | 螺母 M5 | 32 | |
| 3 | GB/T93-1987 | Spring Washer 5 | 弹簧垫圈 5 | 32 | |
| 4 | TFC4016.64A.02.21-02 | Frame | 围框单元 | 8 | |
| 5 | TFC4016.64A.02A.21-03 | Column | 立柱 | 8 | |
| 6 | TFC4016.64A.02.21-04 | Pin | 销 | 16 | |
| 7 | GB/T93-1987 | Spring Washer 12 | 弹簧垫圈 12 | 8 | |
| 8 | GB/T70.3-2000 | Screw M12x20 | 内六角沉头螺钉M12x20 | 8 | |
| 9 | TFC4016.64A.02A.21-06 | Cover Plate | 顶盖板 | 8 | |
| 10 | DGXB16.02.18-05 | Baffle Plate | 挡板 | 8 | |
| 11 | GB/T70.1-2000 | Screw M5x12 | 内六角圆柱头螺钉M5x12 | 32 | |
| 12 | DGXB16.02.18-06 | Spacer Plate | 垫板 | 16 | |
| 13 | GB/T70.1-2000 | Screw M8x20 | 内六角圆柱头螺钉M8x20 | 32 | |
| 14 | QB/D20045 | Handle | 大拉手 | 16 | |
| 15 | DGXB16.02.18-07 | Plate | 外圆板 | 40 | |
| 16 | DGXB16.02.18-08 | Plate | 内圆板 | 40 | |
| 17 | GB/T70.2-2000 | Screw M4x12 | 内六角平圆头螺钉M4x12 | 80 | |





I
1:6

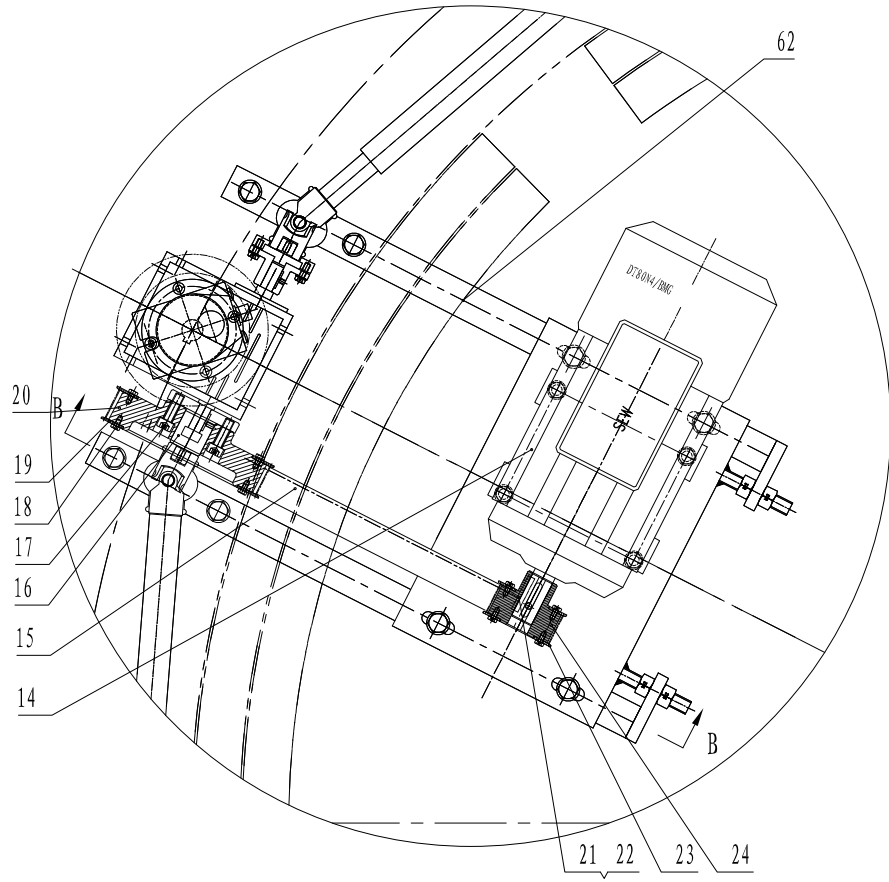


TECH-LONG
Runs for you!

TFC4016. 64A. 02E. 01

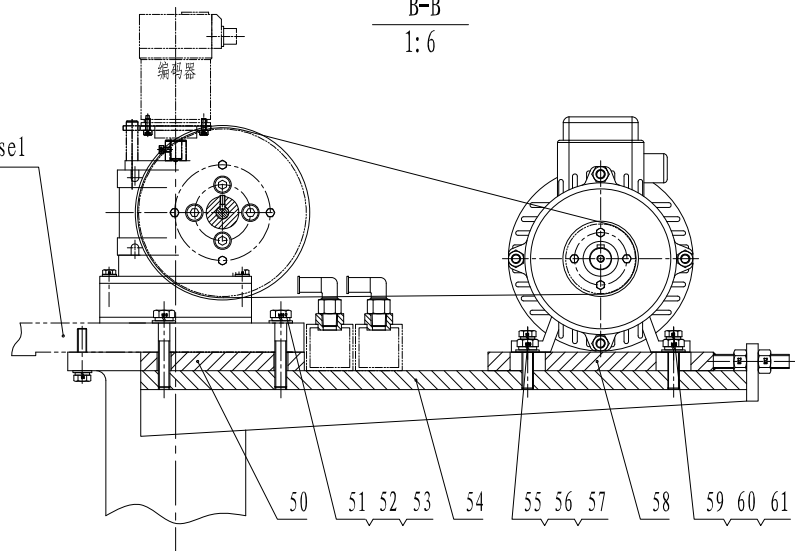
Lifting Device

II
1:6



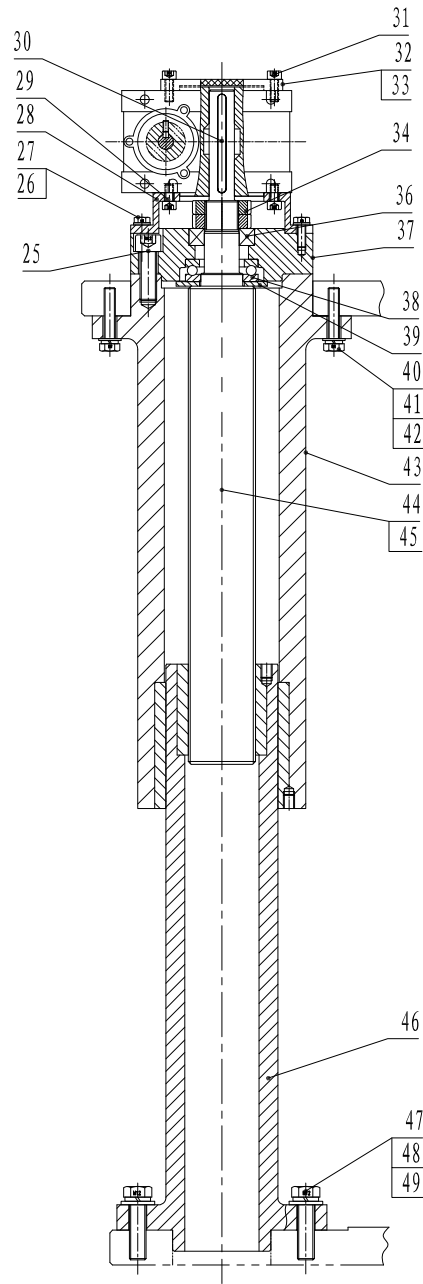
B-B
1:6

Upper Carousel



A-A

1:5



TECH-LONG
Runs for you!

TFC4016. 64A. 02E. 01

Lifting Device

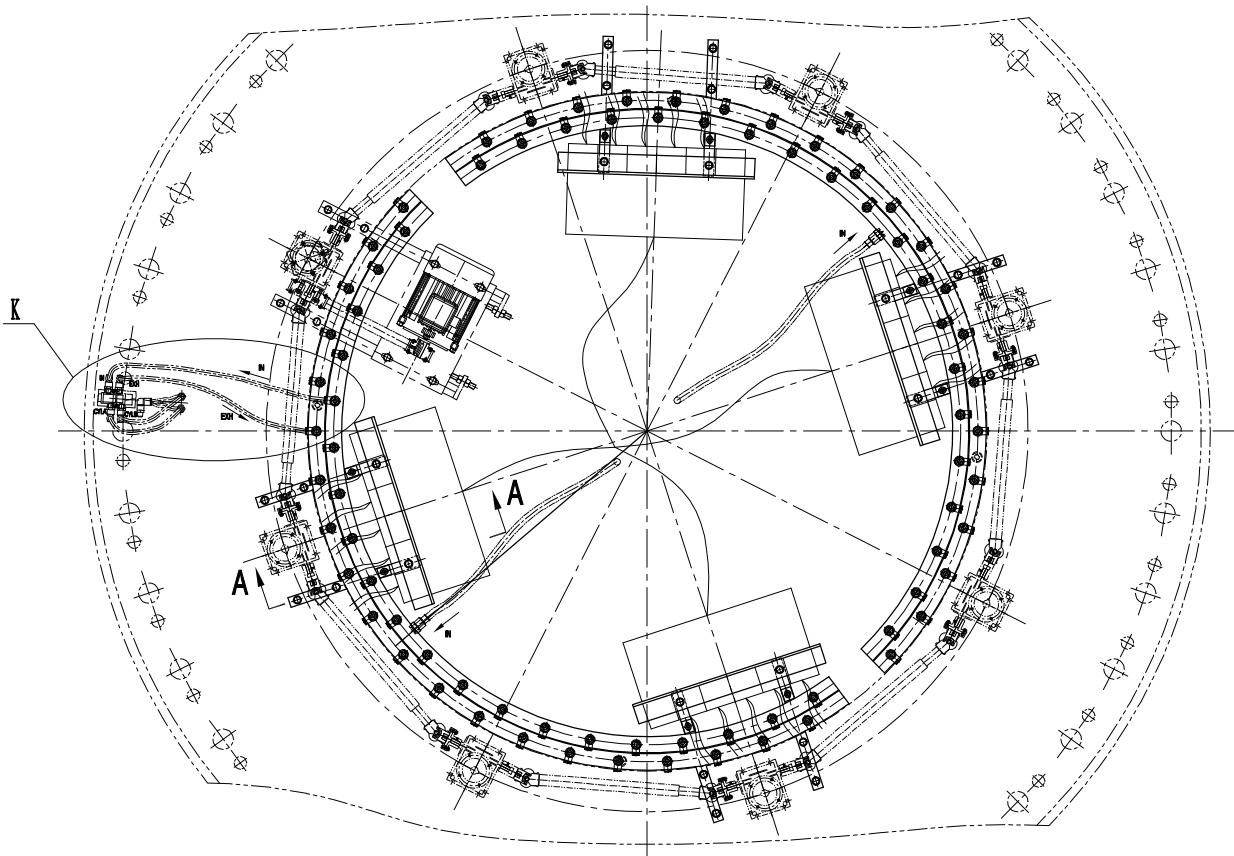
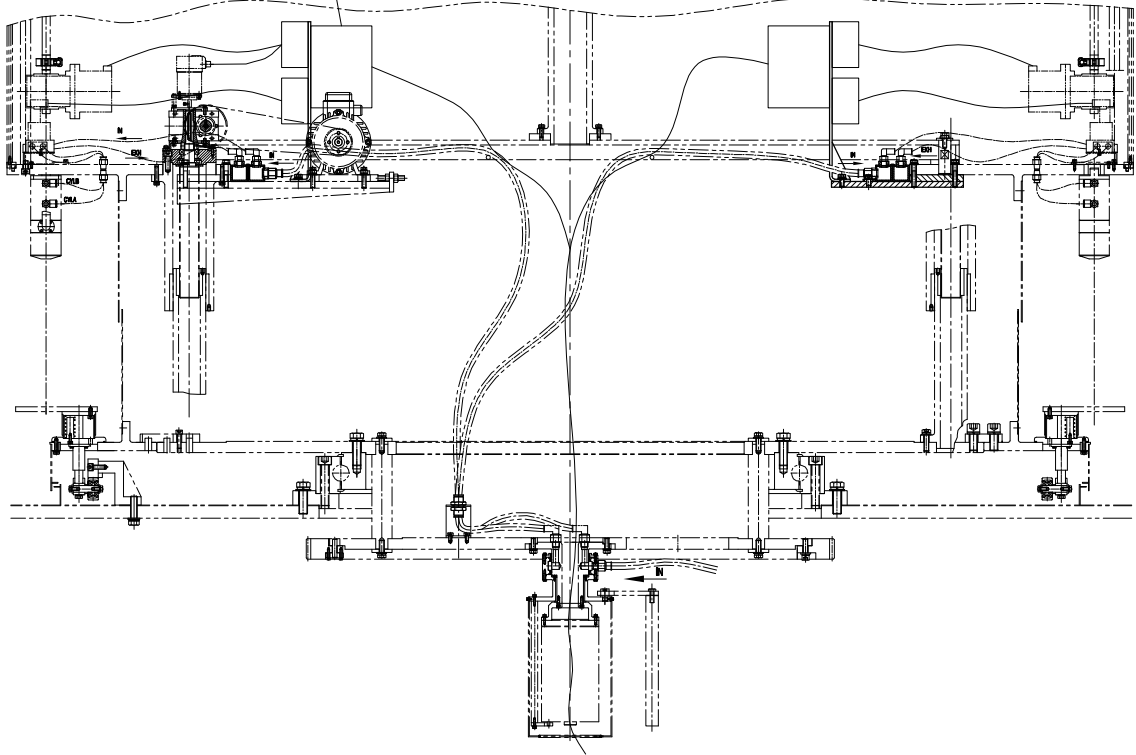
| No. | Code | Description | 名称 | QTY. | Remark |
|-----|--|-------------------------------|---------------------|------|-----------|
| 1 | SJP-14KT(L=500 ⁺⁸⁰ ₀) | Connector | 精密伸缩万向接头(带防护套) | 8 | |
| 2 | DGXB16.02.19-01 | Connection Shift 1 | 连接轴1 | 7 | |
| 3 | NRV040-040-VS | Gearbox | 减速机(双向输入轴) | 8 | MOTOVARIO |
| 4 | DGXB16.02.19-02 | Connection Flange | 连接法兰 | 8 | |
| 5 | GB/T5783 | Bolt M5×16 | 螺栓M5×16 | 32 | |
| 6 | GB/T97.1 | Washer 5 | 垫圈5 | 32 | |
| 7 | GB/T93 | Washer 5 | 垫圈5 | 32 | |
| 8 | GB/T1096 | Key 4×16 | 键4×16 | 16 | |
| 9 | GB/T77 | Screw M4×5 | 螺钉M4×5 | 16 | |
| 10 | DGXB16.02.19-03 | Cover | 压盖 | 8 | |
| 11 | DGXB16.02.19-04 | Connection Shift 2 | 连接轴2 | 8 | |
| 12 | GB/T1096 | Key 5×10 | 键5×10 | 16 | |
| 13 | GB/T77 | Screw M5×5 | 螺钉M5×5 | 16 | |
| 14 | DT80N4/BMG-B3/270° | Motor (0.75kW) | 电机(0.75kW, 卧式, 带制动) | 1 | SEW |
| 15 | 390H100 | Synchronization | 同步带 | 1 | |
| 16 | DGXB16.02.19-07 | Connection Shift 3 | 连接轴3 | 1 | |
| 17 | GB/T70.1 | Screw M8×25 | 螺钉M8×25 | 4 | |
| 18 | GB/T5783 | Bolt M4×6 | 螺栓M4×6 | 16 | |
| 19 | TFC4016.64A.02B.02-02 | Baffle Plate 1 | 挡板1 | 2 | |
| 20 | TFC4016.64A.02B.02-03 | Wheel 1, Synchronization Belt | 同步带轮1 | 1 | |
| 21 | GB/T1096 | Key 6×32 | 键6×32 | 1 | |
| 22 | GB/T77 | Screw M6×10 | 螺钉M6×10 | 1 | |
| 23 | TFC4016.64A.02B.02-04 | Baffle Plate 2 | 挡板2 | 2 | |
| 24 | TFC4016.64A.02B.02-05 | Wheel 2, Synchronization Blet | 同步带轮2 | 1 | |
| 25 | GB/T70.1 | Screw M12×35 | 螺钉M12×35 | 32 | |
| 26 | GB/T5783 | Bolt M6×16 | 螺栓M6×16 | 32 | |
| 27 | GB/T97.1 | Washer 6 | 垫圈6 | 32 | |
| 28 | TFC4016.64A.02B.02-01 | Flange | 输出法兰 | 8 | |
| 29 | GB/T70.1 | Screw M6×12 | 螺钉M6×12 | 32 | |
| 30 | GB/T1096 | Key 6×70 | 键6×70 | 8 | |
| 31 | GB/T70.1 | Screw M6×16 | 螺钉M6×16 | 31 | |
| 32 | DGXB16.02.19-11 | Dust Proof cover A | 防尘盖A | 7 | |
| 33 | DGXB16.02.19-12 | Dust Proof Cover B | 防尘盖B | 1 | |
| 34 | GB/T810 | Nut M24×1.5 | 小圆螺母M24×1.5 | 16 | |



| No. | Code | Description | 名称 | QTY. | Remark |
|-----|----------------------|---------------------|------------|------|--------------|
| 36 | GB/T276 | Bearing 6005-2RZ | 轴承6005-2RZ | 8 | 25 × 47 × 12 |
| 37 | DGXB16.02.19-13 | Bearing Seat | 轴承座 | 8 | |
| 38 | GB/T301 | Bearing 51206 | 轴承51206 | 8 | 30 × 52 × 16 |
| 39 | DGXB16.02.19-14 | Washer | 挡圈 | 8 | |
| 40 | GB/T5783 | Bolt M8 × 40 | 螺栓M8 × 40 | 32 | |
| 41 | GB/T97.1 | Washer 8 | 垫圈8 | 32 | |
| 42 | GB/T93 | Washer 8 | 垫圈8 | 32 | |
| 43 | TFC4016.64A.02.22.01 | Mounting Seat | 安装座 | 8 | |
| 44 | TFC4016.64A.02.22-02 | Screw A | 螺杆A | 7 | |
| 45 | TFC4016.64A.02.22-03 | Screw B | 螺杆B | 1 | |
| 46 | TFC4016.64A.02.22.04 | Nut Seat | 螺母座 | 8 | |
| 47 | GB/T5783 | Bolt M12 × 45 | 螺栓M12 × 45 | 24 | |
| 48 | GB/T97.1 | Washer 12 | 垫圈12 | 24 | |
| 49 | GB/T93 | Washer 12 | 垫圈12 | 24 | |
| 50 | TFC4016.64A.02.22-05 | Spacer Plate | 垫板 | 2 | |
| 51 | GB/T5782 | Bolt M10 × 60 | 螺栓M10 × 60 | 4 | |
| 52 | GB/T97.1 | Washer 10 | 垫圈10 | 4 | |
| 53 | GB/T93 | Washer 10 | 垫圈10 | 4 | |
| 54 | TFC4016.64A.02.22.06 | Supporting Plate 1 | 支撑板1 | 1 | |
| 55 | GB/T5783 | Bolt M10 × 35 | 螺栓M10 × 35 | 4 | |
| 56 | GB/T97.1 | Washer 10 | 垫圈10 | 4 | |
| 57 | GB/T93 | Washer 10 | 垫圈10 | 4 | |
| 58 | TFC4016.64A.02.22-07 | Spacer Plate, Motor | 电机垫板 | 1 | |
| 59 | GB/T5783 | Bolt M8 × 25 | 螺栓M8 × 25 | 4 | |
| 60 | GB/T97.1 | Washer 8 | 垫圈8 | 4 | |
| 61 | GB/T93 | Washer 8 | 垫圈8 | 4 | |
| 62 | TFC4016.64A.02.22.08 | Supporting Plate 2 | 支撑板2 | 1 | |



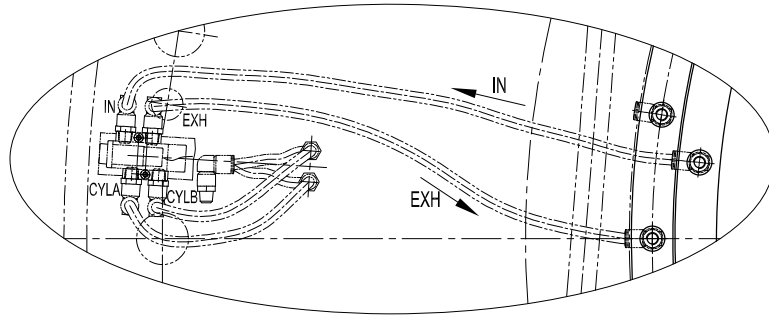
High Speed I/O module



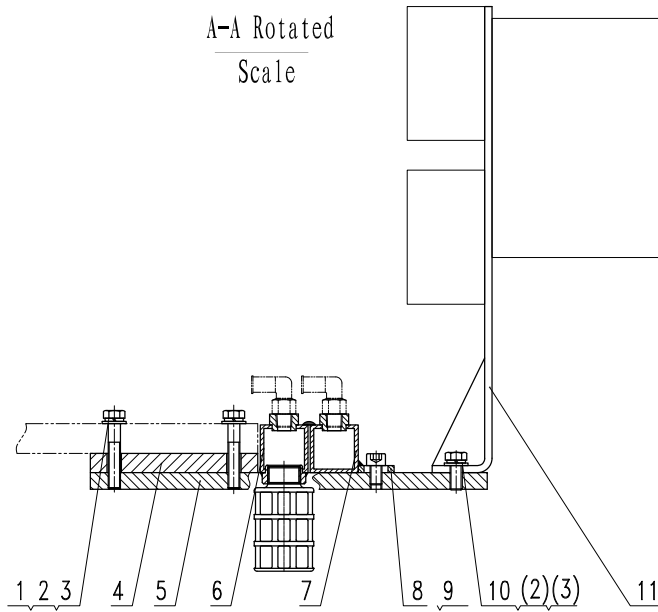
TECH-LONG
Runs for you!

TFC4016. 64A. 02C. 02
Electric Control System

Detail K
40 Units

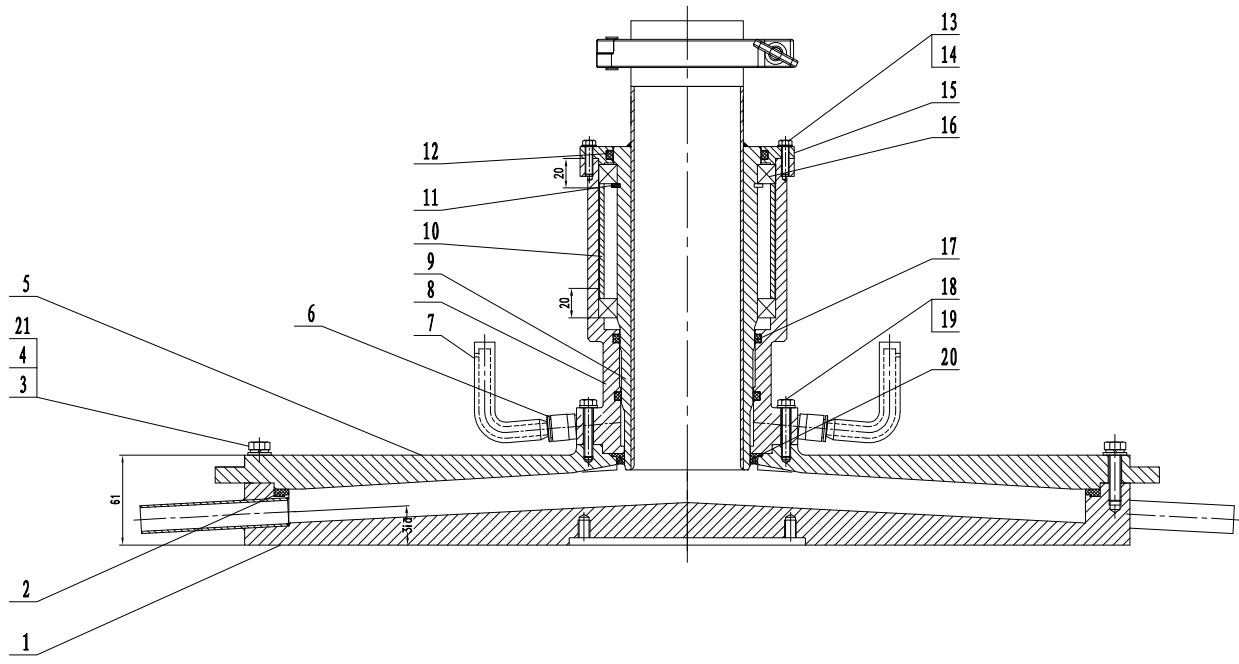


A-A Rotated
Scale



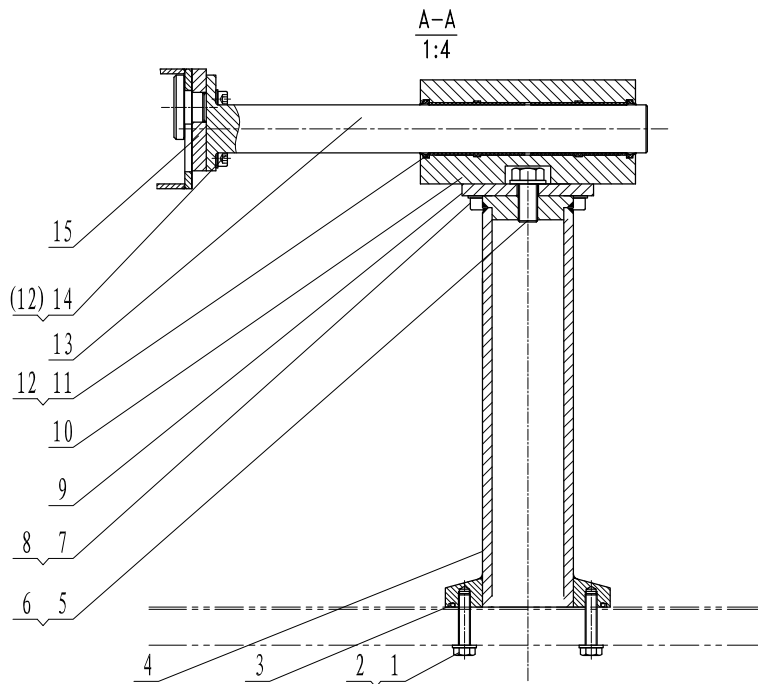
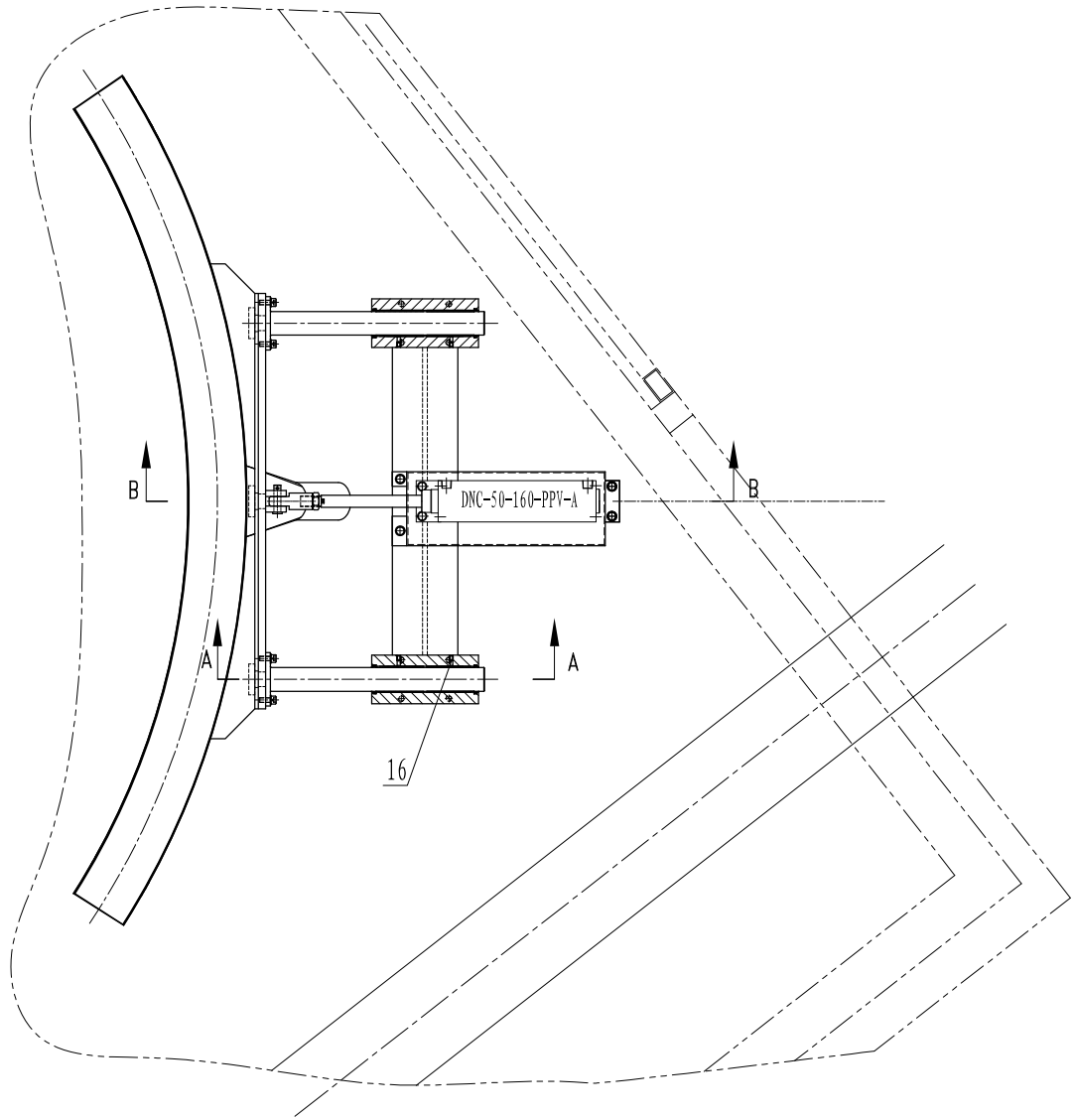
| No. | Code | Description | 名称 | QTY. | Remark |
|-----|-----------------------|------------------|----------|------|--------|
| 1 | GB/T5782 | Bolt M10×60 | 螺栓M10×60 | 16 | |
| 2 | GB/T97.1 | Washer 10 | 垫圈10 | 24 | |
| 3 | GB/T93 | Washer 10 | 垫圈10 | 24 | |
| 4 | TFC4016.64A.02.22-05 | Spacer Plate | 垫板 | 8 | |
| 5 | TFC4016.64A.02.23-01 | Supporting Plate | 支撑板 | 8 | |
| 6 | TFC4016.64A.02C.02.01 | Outtake Tube | 排气管 | 1 | |
| 7 | TFC4016.64A.02.23.03 | Intake Tube | 进气管 | 1 | |
| 8 | TFC4016.64A.02.23-04 | Fixing Block | 固定块 | 8 | |
| 9 | GB/T70.1 | Screw M10×16 | 螺钉M10×16 | 8 | |
| 10 | GB/T5783 | Bolt M10×25 | 螺栓M10×25 | 8 | |
| 11 | TFC4016.64A.02.23.05 | Bracket | 支架 | 4 | |



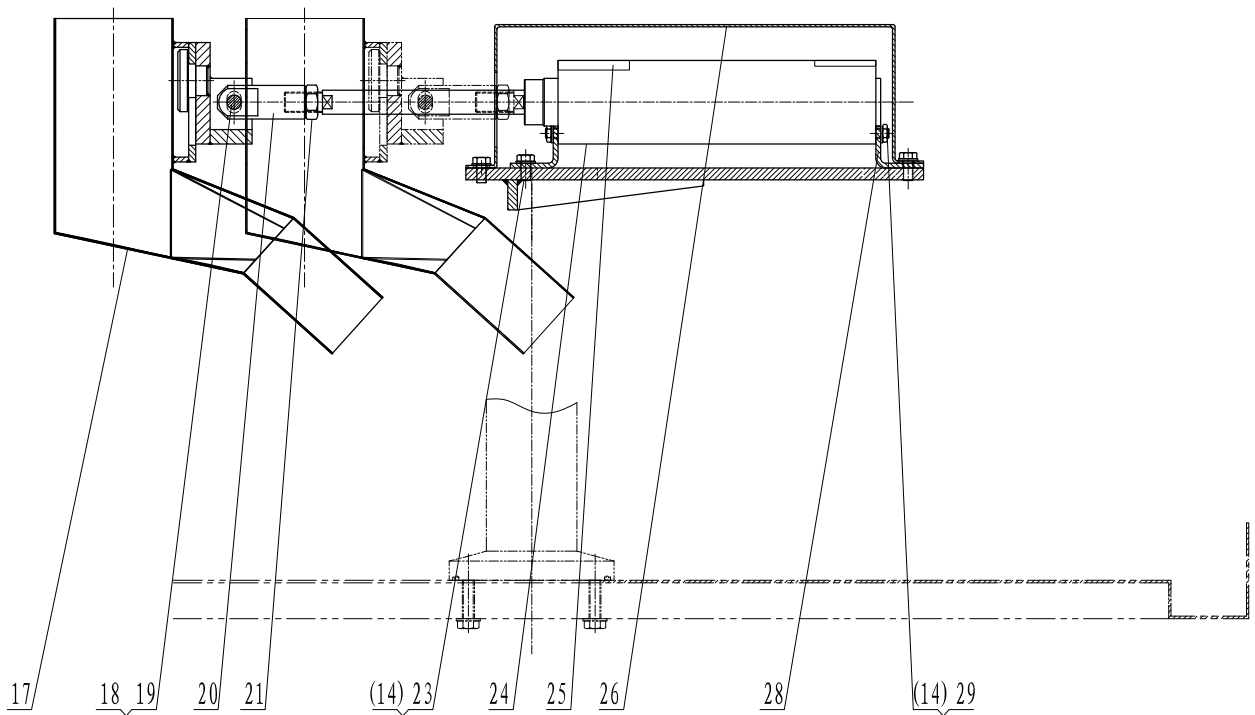


| No. | Code | Description | 名 称 | QTY. | Remark |
|-----|------------------------|-------------------|----------------|------|-----------|
| 1 | TFC4016.64A.02.25A.01 | Base | 底盘 | 1 | |
| 2 | DG×B16.02.23-02 | Seal | 密封圈 | 1 | |
| 3 | GB/T5783 | Bolt M8×20 | 螺栓M8×20 | 16 | |
| 4 | GB/T97.1 | Washer 8 | 平垫圈8 | 16 | |
| 5 | TFC4016.64A.02.25A-02 | Cover | 顶盖 | 1 | |
| 6 | KQGH10-02S | Joint R1/4-10 | 快插式螺纹接头R1/4-10 | 2 | SMC |
| 7 | DG×B16.02.23-04 | Tube | 有机玻璃管 | 2 | |
| 8 | DG×B16.02.23-05 | Shell | 外壳 | 1 | |
| 9 | DG×B16.02.23.06 | Shaft | 内轴 | 1 | |
| 10 | DG×B16.02.23-07 | Bushing | 衬套 | 1 | |
| 11 | GB/T894.2 | Washer 95 | 轴用弹性挡圈95 | 1 | |
| 12 | QRAR04345-V7002 | Ring | 星形圈 | 1 | B+S |
| 13 | GB/T5782 | Bolt M5×16 | 螺栓M5×16 | 4 | |
| 14 | GB/T97.1 | Washer 5 | 平垫圈5 | 4 | |
| 15 | DG×B16.02.23-08 | Side Plate | 端盖 | 1 | |
| 16 | GB/T276 | Bearing 61819-2LS | 轴承61819-2LS | 2 | 95×120×13 |
| 17 | QRAR04342-V7002 | Ring | 星形圈 | 2 | B+S |
| 18 | GB/T5782 | Bolt M6×40 | 螺栓M6×40 | 8 | |
| 19 | GB/T97.1 | Washer 6 | 平垫圈6 | 8 | |
| 20 | TVYXK60014 (Fill PTFE) | Seal | 特康旋转泛塞密封 | 1 | B+S |





B-B
1:4

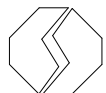
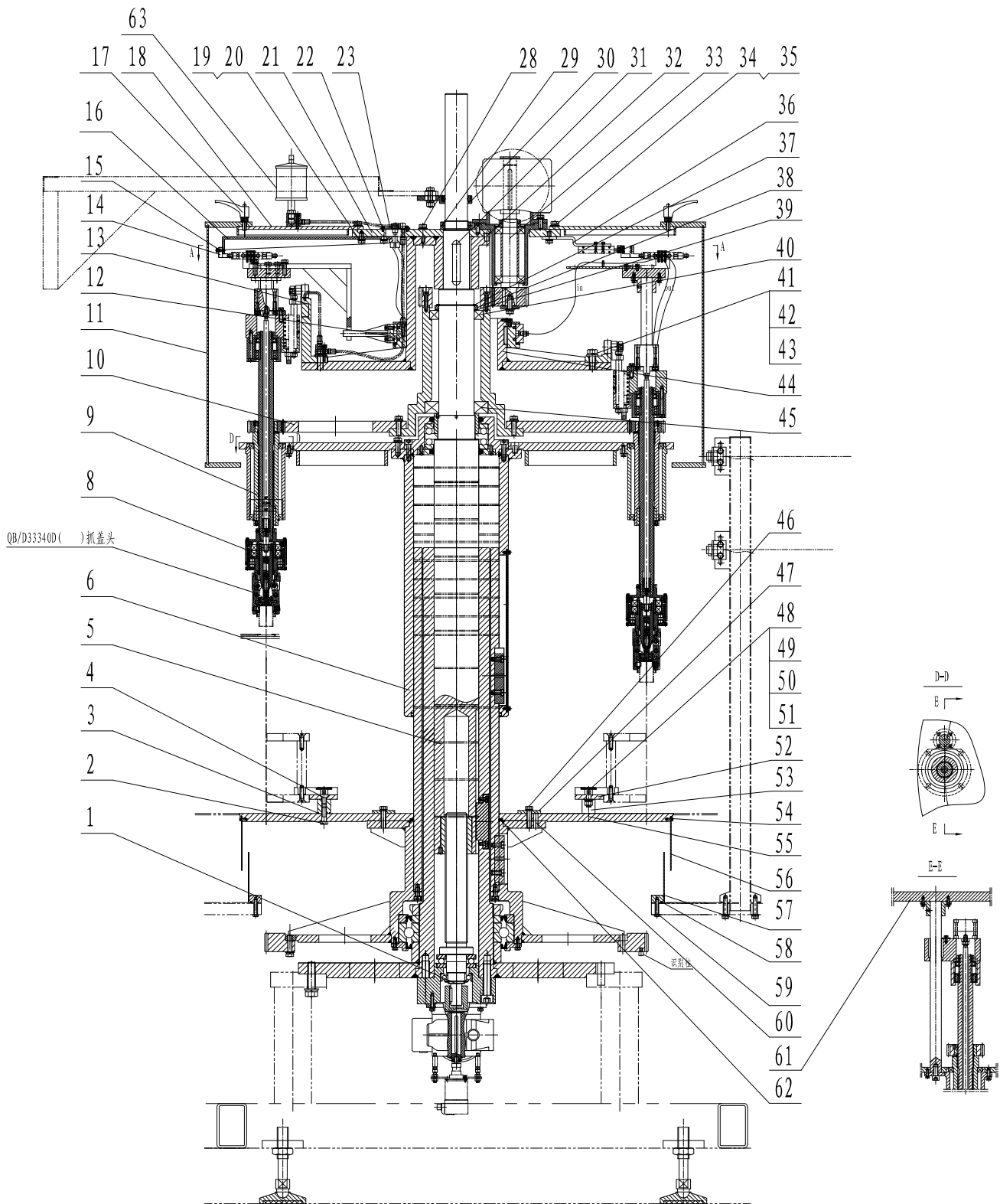


TECH-LONG
Runs for you!

TFC4016.64A.02.30A
CIP Assembly

| No. | Code | Description | 名称 | QTY. | Remark |
|-----|-----------------------|-----------------|----------------|------|--------|
| 1 | GB/T5782-2000 | Bolt M10x45 | 螺栓M10x45 | 6 | |
| 2 | GB/T97.1-1985 | Flat Washer 10 | 平垫圈10 | 6 | |
| 3 | GB/T3452.1-1992 | O Seal 122x3.55 | O型密封圈122x3.55 | 2 | |
| 4 | TFC4016.64A.02.30.01 | Column | 支柱 | 2 | |
| 5 | GB/T5783-2000 | Bolt M16x35 | 螺栓M16x35 | 2 | |
| 6 | GB/T97.1-1985 | Flat Washer 16 | 平垫圈16 | 2 | |
| 7 | GB/T70.1-2000 | Screw M10x25 | 内六角螺钉M10x25 | 8 | |
| 8 | GB/T97.1-1985 | Flat Washer 10 | 平垫圈10 | 8 | |
| 9 | TFC4016.64A.02.30.02A | Plate | 横梁 | 1 | |
| 10 | TFC4016.64A.02.30-03 | Bearing Seat | 轴承座 | 2 | |
| 11 | JUM-01-40 | Bearing | 线性轴承 | 4 | |
| 12 | 89187 | ∅40 Gasket | ∅40防尘圈 | 4 | |
| 13 | DGXB16.02.25-04 | Stem | 导杆 | 2 | |
| 14 | GB/T97.1-1985 | Flat Washer 8 | 平垫圈8 | 18 | |
| 15 | DGXB16.02.25.05 | Plate | 连接板 | 1 | |
| 16 | GB/T77-2000 | Screw M6x8 | 凹端紧定螺钉M6x8 | 4 | |
| 17 | DGXB16.02.25.06 | Tank | 接液槽 | 1 | |
| 18 | GB/T882-1986 | Pin 12x45 | 销轴12x45 | 1 | |
| 19 | GB/T91-2000 | Pin 4x18 | 开口销4x18 | 1 | |
| 20 | DGXB16.02.25-07A | Joint | 肘节接头 | 1 | |
| 21 | GB/T6173-2000 | Nut M16x1.5 | 六角薄螺母细牙M16x1.5 | 1 | |
| 22 | | | | | |
| 23 | GB/T5783-2000 | Bolt M8x16 | 螺栓M8x16 | 6 | |
| 24 | DNC-50-160-PPV-A | Cylinder | 气缸 | 1 | |
| 25 | SME-8-K-LED-24 | Switch | 行程开关 | 2 | |
| 26 | TFC4016.64A.02.30A-01 | Shield | 防护罩 | 1 | |
| 27 | | | | | |
| 28 | DGXB16.02.25-10A | Bracket | 脚架 | 2 | |
| 29 | GB/T6172.1-2000 | Nut M8 | 薄螺母M8 | 4 | |



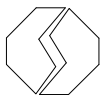
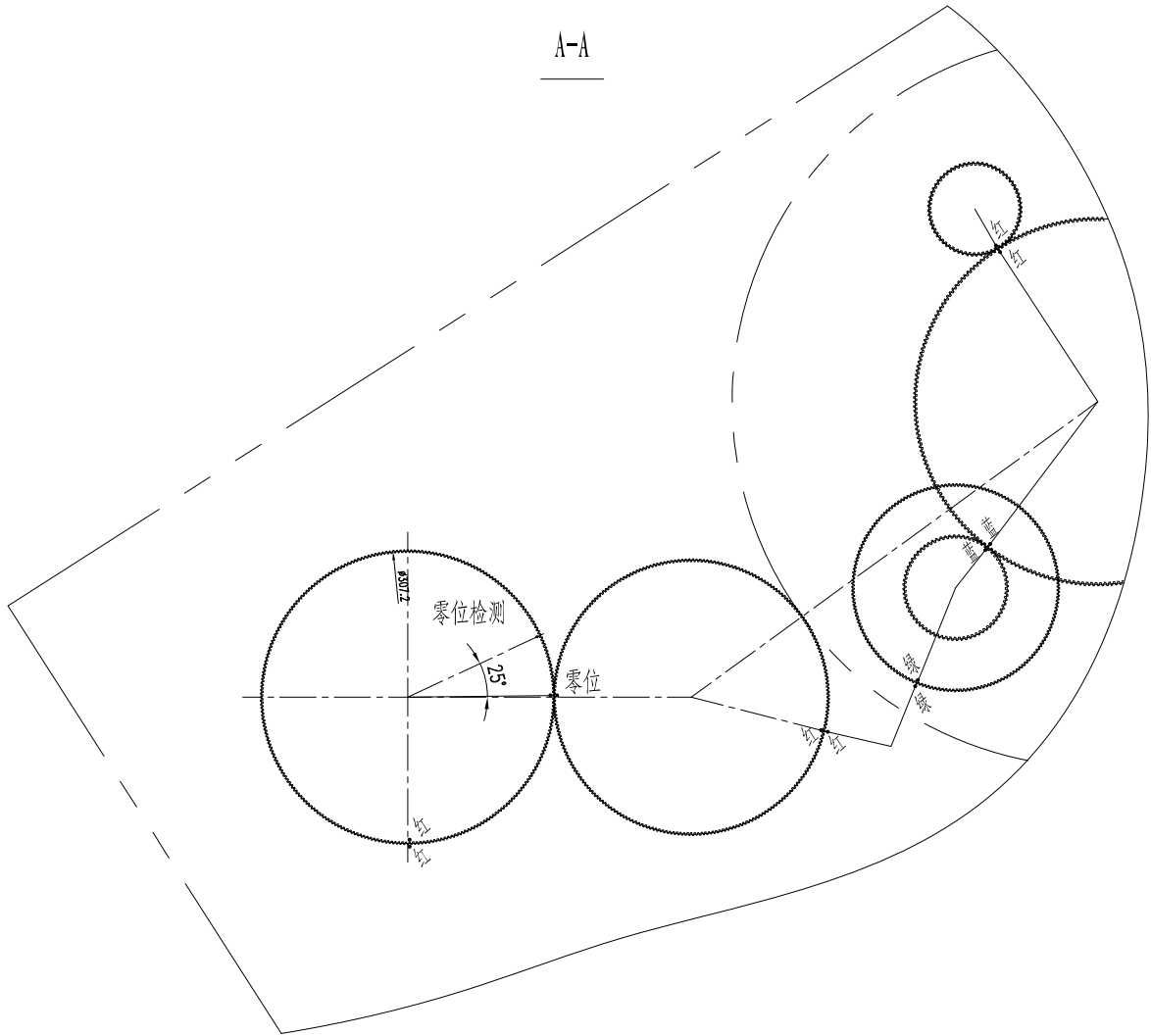


TECH-LONG
Runs for you!

TFC4016.64A.03E

Capper

A-A

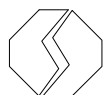


TECH-LONG
Runs for you!

TFC4016.64A.03E

Capper

| No. | Code | Description | 名称 | QTY. | Remark |
|-----|------------------------------|-----------------------|-----------------|------|--------|
| 1 | TFC4016.64A.03C.01 | Lifting Device | 升降装置 | 1 | |
| 2 | GB/T27 | Bolt M12X40 | 六角头铰制孔用螺栓M12×40 | 6 | |
| 3 | GB/T3452.1 | O Seal 28X1.8 | O形密封圈28×1.8 | 6 | |
| 4 | GB/T70.3 | Screw M12X16 | 内六角沉头螺钉M12×16 | 6 | |
| 5 | TFC4016.64A.03C.02 | Main Shaft | 主轴 | 1 | |
| 6 | TFC4016.64A.03.03 | Rotary Assembly | 旋转组件 | 1 | |
| 7 | | | | | |
| 8 | QB/D33300C | Capping Clutch | 旋盖头 | 16 | |
| 9 | QB/D33400E | Capping Arm | 旋盖臂 | 16 | |
| 10 | TFC4016.64A.03.04 | Gear | 双联齿轮 | 1 | |
| 11 | TFC4016.64A.03A.05 | Frame | 上围框 | 1 | |
| 12 | TFC4016.64A.03B.02 | Distributor | 分配器 | 1 | |
| 13 | TFC4016.64A.03A-07(项目编号) | Cam | 凸轮 | 1 | |
| 14 | TFC4016.64A.03E-01 | Block | 撞块 | 1 | |
| 15 | GB/T70.1 | Screw M6X16 | 螺钉M6×16 | 2 | |
| 16 | TFC4016.64A.03B-03 | Plate | 固定板 | 1 | |
| 17 | 234521-C6 ERX.78 p-M10×25-C6 | Hamdle | 带红色按钮的可调节手柄 | 12 | E+G |
| 18 | TFC4016.64A.03-11 | Plate | 围框固定板 | 1 | |
| 19 | GB/T5783 | Bolt M12X35 | 螺栓M12×35 | 4 | |
| 20 | GB/T97.1 | Washer 12 | 垫圈12 | 4 | |
| 21 | TFC4016.64A.03A-12 | Plate | 顶板 | 1 | |
| 22 | GB/T70.1 | Screw M5X8 | 螺钉M5×8 | 6 | |
| 23 | TFC4016.64A.03-13 | Plate | 盖板 | 2 | |
| 24 | | | | | |
| 25 | | | | | |
| 26 | | | | | |
| 27 | | | | | |
| 28 | GB/T5783 | Bolt M12X35 | 螺栓M12×35 | 5 | |
| 29 | GB/T810 | Not M64X2 | 小圆螺母M64×2 | 2 | |
| 30 | TFC4016.64A.03C.03A | Anti-Vibration Device | 防振装置 | 1 | |
| 31 | GB/T1096 | Key 20X12X120 | 键20×12×120 | 1 | |



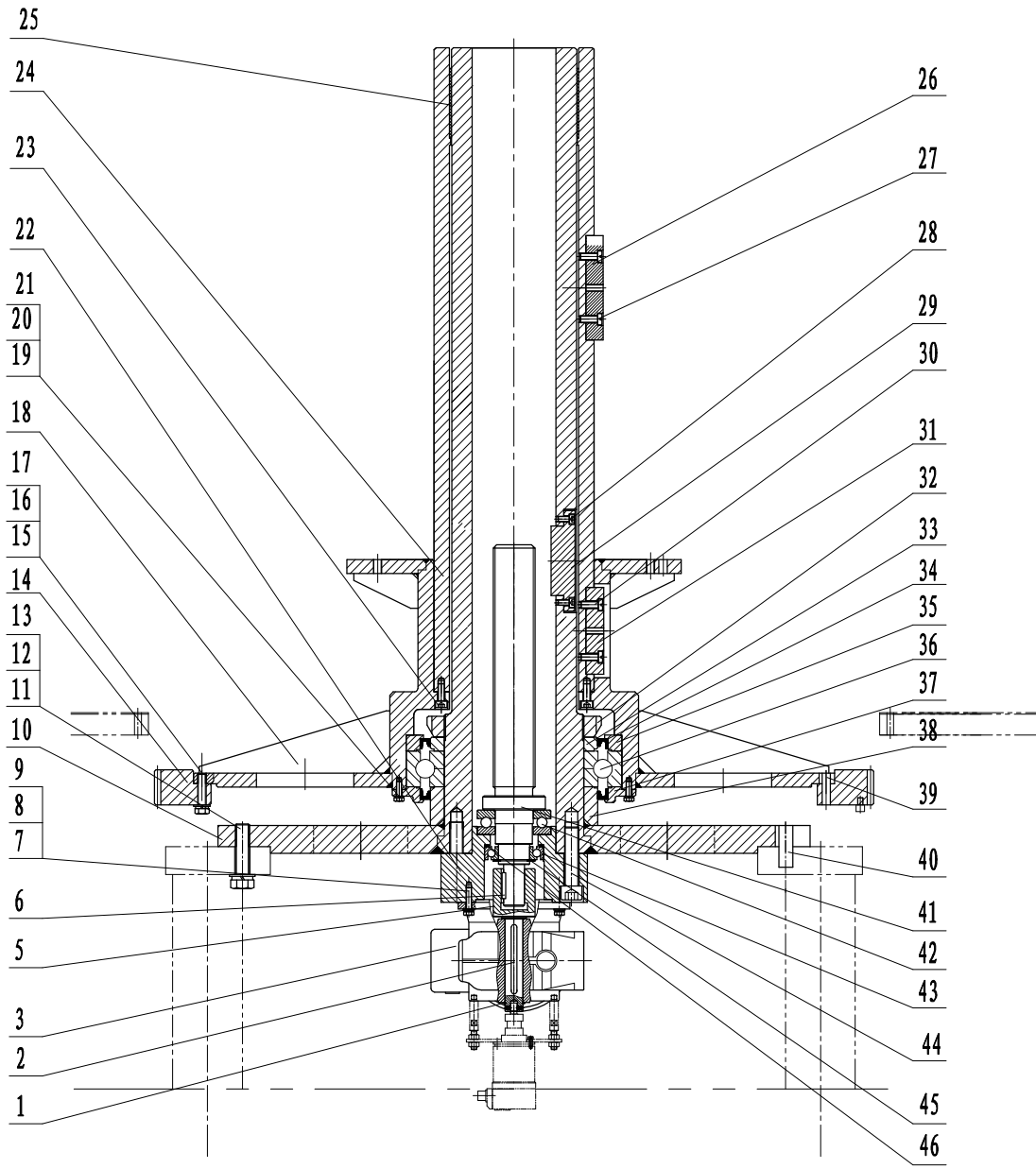
TECH-LONG
Runs for you!

TFC4016.64A.03E

Capper

| No. | Code | Description | 名称 | QTY. | Remark |
|-----|--------------------|------------------------|--------------|------|--------|
| 32 | GB/T119.2 | Pin 12X20 | 圆柱销12×20 | 1 | |
| 33 | TFC4016.64A.03C.04 | Motor Assembly | 高速旋盖电机组件 | 1 | |
| 34 | GB/T5783 | Bolt M12X30 | 螺栓M12×30 | 8 | |
| 35 | GB/T97.1 | Washer 12 | 垫圈12 | 8 | |
| 36 | TFC4016.64A.03B.04 | Cylinder | 无盖不抓盖气缸装置 | 1 | |
| 37 | GB/T894.1 | Retainer 95 | 挡圈95 | 1 | |
| 38 | TFC4016.64A.03-17 | Ring | 压紧环 | 1 | |
| 39 | D110 | Spring | 波形弹簧 | 1 | 上海核工 |
| 40 | GB/T276 | Bearing 6019-2LS | 轴承 6019-2LS | 1 | |
| 41 | GB/T5783 | Bolt M16X40 | 螺栓M16×40 | 8 | |
| 42 | GB/T97.1 | Washer 16 | 垫圈16 | 8 | |
| 43 | GB/T93 | Washer 16 | 垫圈16 | 8 | |
| 44 | TFC4016.64A.03-18 | Cam Seat | 凸轮座 | 1 | |
| 45 | GB/T276 | Bearing 6219-2LS | 轴承6219-2LS | 1 | |
| 46 | GB/T5783 | Bolt M12X40 | 螺栓M12×40 | 8 | |
| 47 | TFC4016.64A.03-19 | Spacer | 垫片 | 8 | |
| 48 | TFC4016.64A.05A-02 | Post | 限位柱 | 12 | |
| 49 | GB/T6170 | Nut M12 | 螺母M12 | 12 | |
| 50 | GB/T97.1 | Washer 12 | 垫圈12 | 12 | |
| 51 | GB/T93 | Washer 12 | 垫圈12 | 12 | |
| 52 | TFC4016.64A.03-20 | Plate | 星轮托板 | 1 | |
| 53 | TFC4016.64A.03-21 | Column | 圆柱 | 6 | |
| 54 | GB/T70.1 | Screw M5X8 | 螺钉M5×8 | 12 | |
| 55 | TFC4016.64A.03-22 | Plate | 托板 | 1 | |
| 56 | TFC4016.64A.03-23 | Frame Plate | 上围板 | 1 | |
| 57 | TFC4016.64A.03.24 | Frame Plate | 下围板 | 1 | |
| 58 | JB/ZQ4609 | Rubber 4X3600 | 圆橡胶4×3600 | 1 | |
| 59 | GB/T5783 | Bolt M8X40 | 螺栓M8×40 | 8 | |
| 60 | GB/T119.2 | Pin 12X40 | 圆柱销12×40 | 1 | |
| 61 | TFC4016.64A.03E.02 | Fixing Bracket | 杠杆阀固定架 | 1 | |
| 62 | GB/T3452.1 | O Seal 230X7.0 | O形密封圈230×7.0 | 1 | |
| 63 | TFC4016.64A.03B.06 | Cam Lubrication Device | 凸轮给油装置 | 1 | |





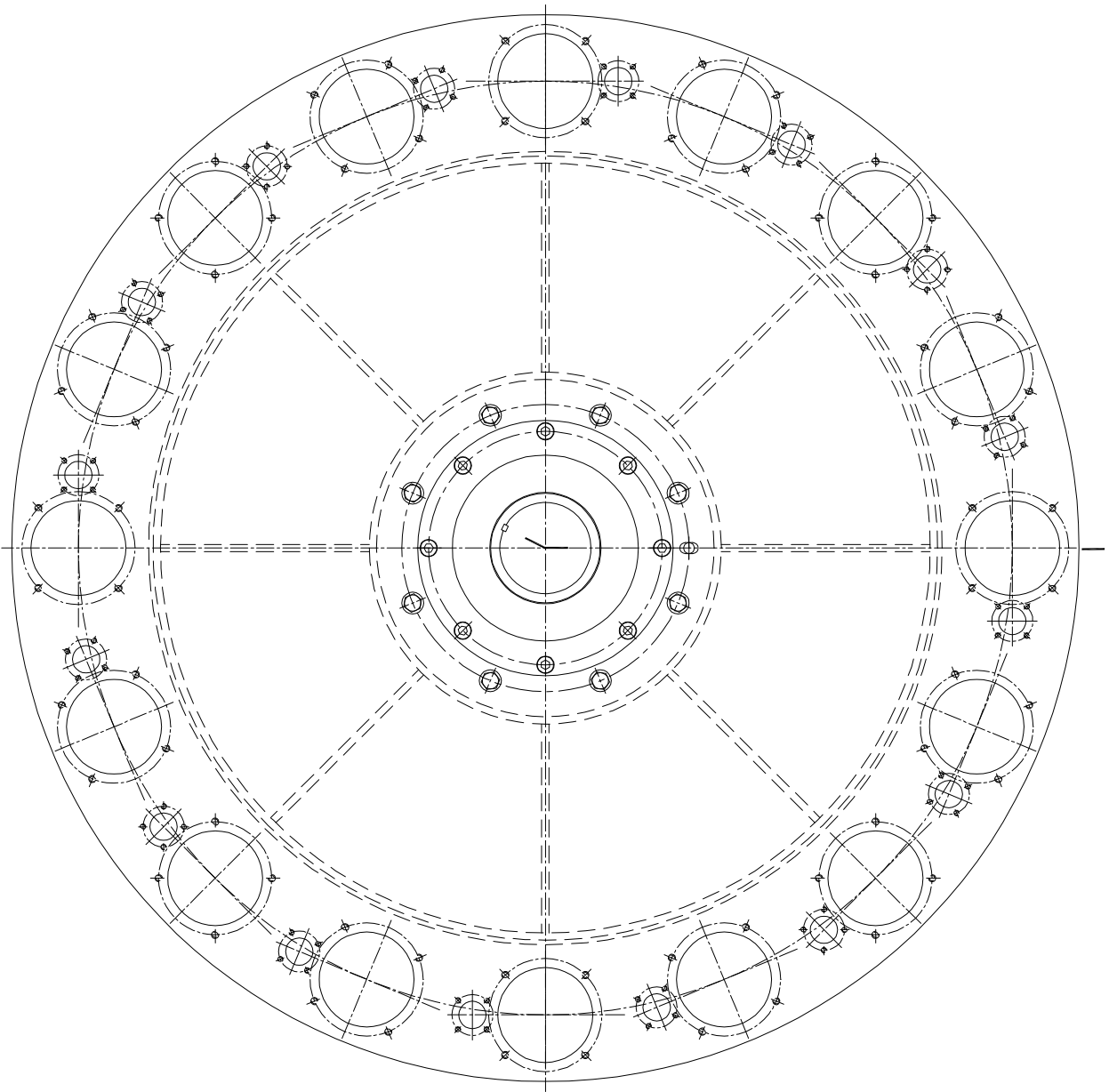
| No. | Code | Description | 名称 | QTY. | Remark |
|-----|-------------------------|------------------------------|---------------------|------|---------------|
| 1 | GB/T894.1 | Washer 25 | 挡圈25 | 1 | |
| 2 | GB/T1096 | Key 8×10 | 键8×10 | 1 | |
| 3 | SAF47DT80N4/BMG-M6A270° | Geared Motor 0.75kW, i=47.32 | 减速电机0.75kW, i=47.32 | 1 | SEW(φ25空心轴输出) |
| 4 | | | | | |
| 5 | TFC4016.64A.03B.01-01 | Shaft | 轴 | 1 | |
| 6 | GB/T1096 | Key 8×40 | 键8×40 | 1 | |
| 7 | GB/T5783 | Bolt M8×35 | 螺栓M8×35 | 4 | |
| 8 | GB/T97.1 | Washer 8 | 垫圈8 | 4 | |
| 9 | GB/T93 | Washer 8 | 垫圈8 | 4 | |
| 10 | TFC4016.64A.03C.01-01 | Shaft | 轴 | 1 | |
| 11 | GB/T5783 | Bolt M20×80 | 螺栓M20×80 | 8 | |
| 12 | GB/T97.1 | Washer 20 | 垫圈20 | 8 | |
| 13 | GB/T93 | Washer 20 | 垫圈20 | 8 | |
| 14 | TFC4016.64A.03.01-03 | Gear Wheel | 齿轮 | 1 | |
| 15 | GB/T5783 | Bolt M12×50 | 螺栓M12×50 | 12 | |
| 16 | GB/T97.1 | Washer 12 | 垫圈12 | 12 | |
| 17 | GB/T93 | Washer 12 | 垫圈12 | 12 | |
| 18 | TFC4016.64A.03.01-04 | Mounting Seat | 安装座 | 1 | |
| 19 | GB/T5783 | Bolt M8×20 | 螺栓M8×20 | 8 | |
| 20 | GB/T97.1 | Washer 8 | 垫圈8 | 8 | |
| 21 | GB/T93 | Washer 8 | 垫圈8 | 8 | |
| 22 | TFC4016.64A.03B.01-02 | Flange | 法兰 | 1 | |
| 23 | GB/T70.1 | Screw M10×25 | 螺钉M10×25 | 6 | |
| 24 | TFC4016.64A.03.01-06 | Column | 圆柱 | 1 | |
| 25 | 180100DU | DU Column Sleeve | DU 圆柱套 | 1 | GGB |
| 26 | TFC4016.64A.03.01-07 | Slip Key | 滑键 | 1 | |
| 27 | GB/T65 | Screw M10×25 | 螺钉M10×25 | 2 | |
| 28 | GB/T70.1 | Screw M8×16 | 螺钉M8×16 | 2 | |
| 29 | TFC4016.64A.03.01-08 | Slip Key | 滑键 | 1 | |
| 30 | GB/T65 | Screw M10×25 | 螺钉M10×25 | 2 | |
| 31 | TFC4016.64A.03.01-09 | Slip Key | 滑键 | 1 | |
| 32 | GB/T812 | Nut M200×3 | 圆螺母M200×3 | 1 | |
| 33 | TFC4016.64A.03.01-10 | Ring | 环 | 1 | |
| 34 | GB/T13871 | Seal B240×270×15 | 密封圈B240×270×15 | 2 | |



| No. | Code | Description | 名称 | QTY. | Remark |
|-----|----------------------|----------------|---------------|------|----------------|
| 35 | TFC4016.64A.03.01-11 | Ring | 环 | 1 | |
| 36 | GB/T294 | Bearing QJ1040 | 四点接触轴承 QJ1040 | 1 | 200 × 310 × 51 |
| 37 | TFC4016.64A.03.01-12 | Ring | 环 | 1 | |
| 38 | TFC4016.64A.03.01-13 | Ring | 环 | 1 | |
| 39 | GB/T119.2 | Pin 12 × 45 | 销12 × 45 | 1 | |
| 40 | GB/T119.2 | Pin 10 × 60 | 销10 × 60 | 1 | |
| 41 | TFC4016.64A.03.01-14 | Screw | 螺杆 | 1 | |
| 42 | GB/T301 | Bearing 51311 | 轴承51311 | 1 | 55 × 105 × 35 |
| 43 | GB/T292 | Bearing 7209AC | 轴承7209AC | 1 | 45 × 85 × 19 |
| 44 | GB/T70.1 | Screw M20 × 85 | 螺钉M20 × 85 | 4 | |
| 45 | GB/T894.1 | Washer 45 | 挡圈45 | 1 | |
| 46 | D85 | Spring | 波形弹簧 | 1 | |



A



TECH-LONG
Runs for you!

TFC4016. 64A. 03. 03
Rotary Assembly